

ABBYY®

1.				3
1.1.				3
2.				4
2.1.				4
2.2.				4
3.				6
3.1.				5
	%			
3.1.1.				7
3.2.		(%),	8
3.2.1.		(%),	10
3.3.				11
	%			
3.3.1.				12
3.4.		(%),	13
3.4.1.		(%)	14
	,			
4.				15
4.1.				15
4.2.				15
4.3.				19
4.4.				19

1.

1.1 Общие характеристики проведённой работы

1

13/9/2016 - 30/9/2016 .

- ,

21

11.57

26

45%

2.

2.1.

	-	.	%
17	21	11.57	45%
	76	13.07	50%
" "	907	12.12	47%
	1272	12.41	48%

2.2.

	-	.	%
9	5	13.60	52%
9	9	9.78	38%
9	7	12.43	48%
17	21	11.57	45%

3.1.**%**

		.% .
1.15	.	67%
3.19	.	67%
3.20	.	56%
3.6		56%
1.22	.	56%
1.8	.	56%
1.3		53%
3.17		50%
1.21	.	44%
3.5	. .	44%
2.5	: ,	44%
3.11		44%
2.11		40%
1.14		33%
2.1	. ,	33%
3.1		33%
1.19	.	32%
3.7	.	22%
2.10		20%
3.10	.	17%
3.2	.	17%
3.8		11%
1.1	. . .	0%

1.24		0%
------	--	----

3.1.1.

		9	9	9
1.1		0%	0%	0%
1.3		67%	40%	61%
1.8		54%	58%	54%
1.14		100%	0%	33%
1.15		67%	100%	25%
1.19		58%	10%	42%
1.21		83%	13%	58%
1.22		75%	63%	33%
1.24		0%	0%	0%
2.1		33%	20%	50%
2.5		100%	25%	33%
2.10		17%	25%	16%
2.11		33%	50%	31%
3.1		17%	50%	25%
3.2		0%	13%	33%
3.5		67%	35%	42%
3.6		50%	50%	67%
3.7		25%	19%	25%
3.8		0%	0%	33%
3.10		33%	0%	25%
3.11		100%	25%	33%
3.17		67%	20%	75%
3.19		100%	20%	100%
3.20		50%	50%	67%

3.2.

(%

),

		. % .
		42%
1.15	.	67%
1.22	.	56%
1.8	.	56%
1.3		53%
1.21	.	44%
1.14		33%
1.19	.	32%
1.24		0%
1.1	.	0%
		36%
3.19	.	67%
3.20	.	56%
3.6		56%
3.17		50%
3.5	.	44%
3.11		44%
3.1		33%
3.7	.	22%
3.10	.	17%
3.2	.	17%
3.8		11%
		30%
2.5	:	44%

		.% .
2.11		40%
2.1	.	33%
2.10		20%

3.2.1.

(%),

			9	9	9
	1.1		0%	0%	0%
	1.3		67%	40%	61%
	1.8		54%	58%	54%
	1.14		100%	0%	33%
	1.15		67%	100%	25%
	1.19		58%	10%	42%
	1.21		83%	13%	58%
	1.22		75%	63%	33%
	1.24		0%	0%	0%
	2.1		33%	20%	50%
	2.5		100%	25%	33%
	2.10		17%	25%	16%
	2.11		33%	50%	31%
	3.1		17%	50%	25%
	3.2		0%	13%	33%
	3.5		67%	35%	42%
	3.6		50%	50%	67%
	3.7		25%	19%	25%
	3.8		0%	0%	33%
	3.10		33%	0%	25%
	3.11		100%	25%	33%
	3.17		67%	20%	75%
	3.19		100%	20%	100%
	3.20		50%	50%	67%

3.3.1.

		9	9	9
1.1		67%	23%	42%
1.2		69%	28%	53%
1.3		75%	38%	49%
1.4		44%	40%	41%

3.4.1.

(%) ,

		9	9	9
	1.1	67%	23%	42%
	1.2	69%	28%	53%
	1.3	75%	38%	49%
	1.4	44%	40%	41%

4.

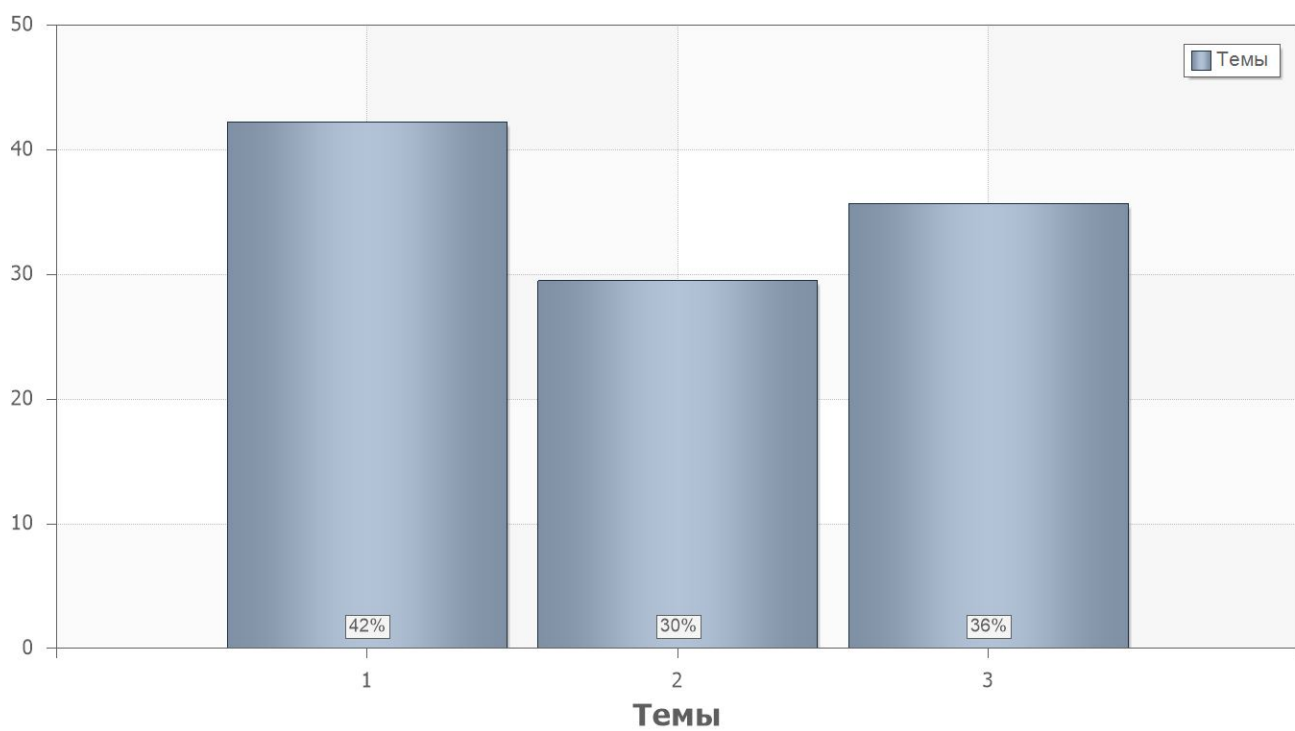
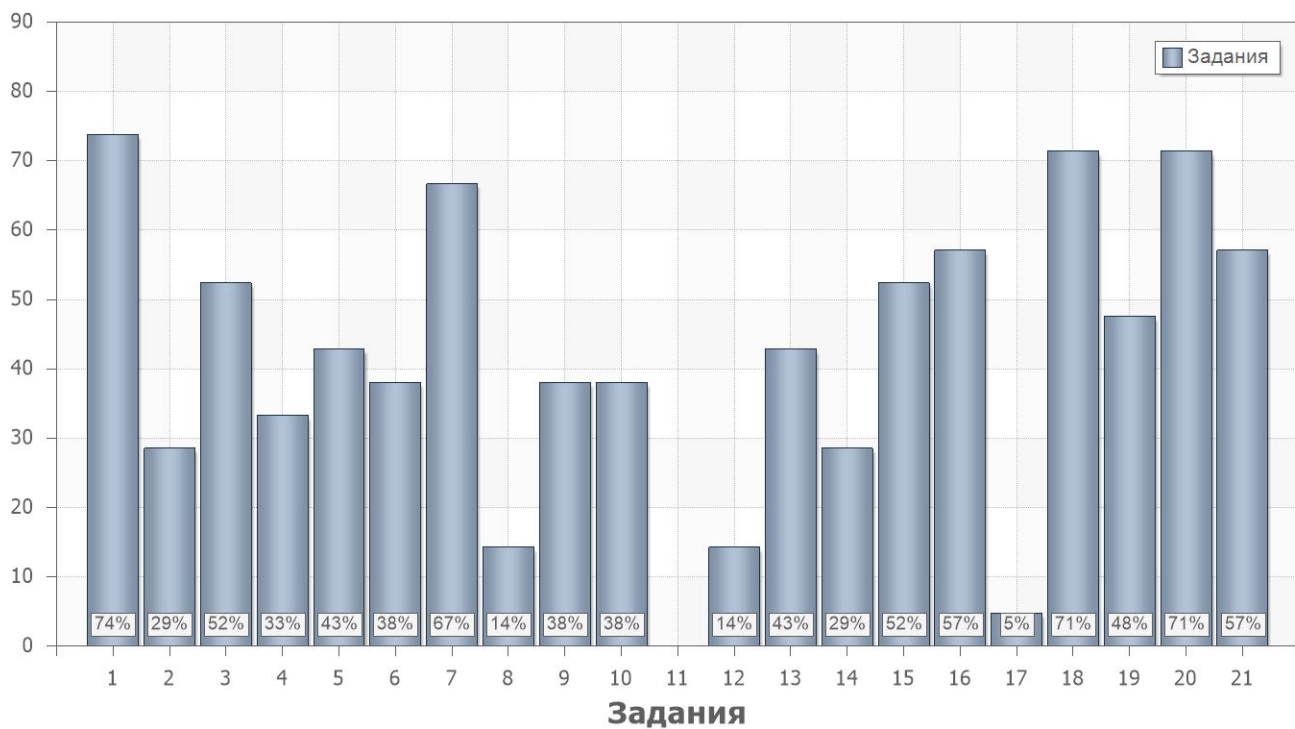
4.1.

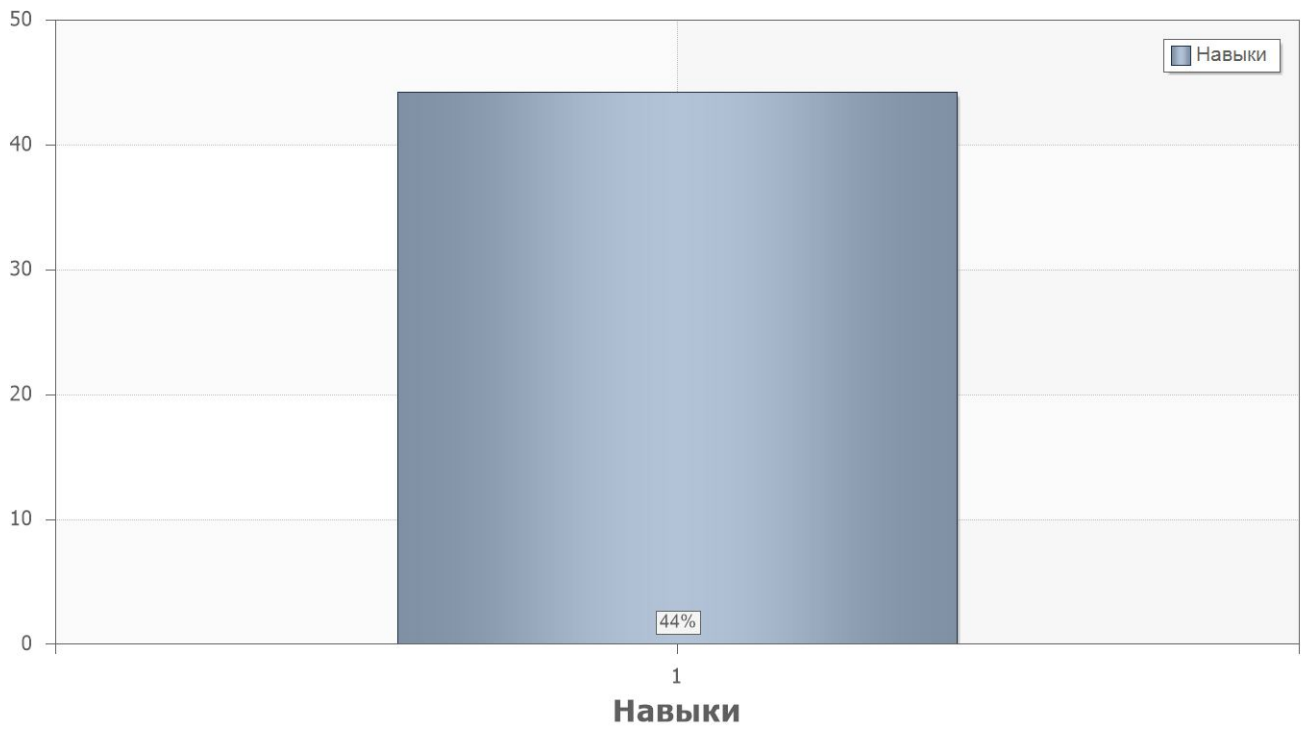
	. % .
2	41
1	49

4.2.

	. % .		
1			
1	74	2	1.2
2	29	1.1	1.2
3	52	1.15	1.3
4	33	1.19	1.2
5	43	1.21	1.2
6	38	1.8	1.4
7	67	1.3	1.4
8	14	1.24	3
9	38	2.1	1.1
10	38	2.10;2.11	1.4
11	0	2.10	3
12	14	3.2	1.4
13	43	3.5	1.3
14	29	3.10	1.4
15	52	3.17	1.4
16	57	3.19	1.3
17	5	3.7	3
18	71	1	2
19	48	3.1	2

	. % .		
20	71	2	4
21	57	2	4





4.3.

Name	9	9	9
1	65%	38%	53%
2	44%	37%	44%

4.4.

PartIndex	Number	9	9	9
1	1	80%	67%	79%
	2	40%	22%	29%
	3	80%	56%	29%
	4	60%	11%	43%
	5	80%	11%	57%
	6	40%	56%	14%
	7	60%	72%	64%
	8	20%	0%	29%
	9	60%	22%	43%
	10	30%	50%	29%
	11	0%	0%	0%
	12	0%	11%	29%
	13	60%	33%	43%
	14	60%	11%	29%
	15	60%	33%	71%
	16	80%	28%	79%
	17	0%	0%	14%
	18	80%	56%	86%
	19	50%	50%	43%
	20	60%	78%	71%
	21	60%	44%	71%