

ABBYY®

1.				3
1.1.				3
2.				4
2.1.				4
2.2.				4
3.				6
3.1.				5
	%			
3.1.1.				8
3.2.		(%),	9
3.2.1.		(%),	11
3.3.				13
	%			
3.3.1.				14
3.4.		(%),	15
3.4.1.		(%)	16
	,			
4.				17
4.1.				17
4.2.				17
4.3.				21
4.4.				21

1.

1.1 Общие характеристики проведённой работы

2

07/9/2016 - 21/9/2016 .

- ,

49

32.61

38

86%

2.

2.1.

	-	.	%
17	49	32.61	86%
	451	21.97	58%
" "	5989	20.77	55%
	8443	22.26	59%

2.2.

	-	.	%
11	21	32.38	85%
11	10	31.20	82%
11	18	33.67	89%
17	49	32.61	86%

3.1.

%

		.% .
6.7	(- -/ -)	98%
9.1		98%
9.2		98%
6.16	, ,	98%
6.6		98%
6.11		96%
6.13		96%
7.18		95%
7.2		95%
6.10		94%
9.3	()	94%
7.12		94%
9.4	()	93%
7.8	,	92%
2.2	. .	92%
2.3		92%
2.4		92%
2.5		92%
2.1		92%
7.7	()	92%
8.6	-	90%
6.5		90%

8.2		84%
7.13		65%
7.15		65%
8.3	-	65%
10.5		65%
6.8	- - - -	61%
8.1	.	28%

3.1.1.

		11	11	11
2.1		90%	80%	100%
2.2		90%	80%	100%
2.3		90%	80%	100%
2.4		90%	80%	100%
2.5		90%	80%	100%
6.5		80%	100%	94%
6.6		95%	100%	100%
6.7	(- -/ - -)	95%	100%	100%
6.8	- - - -	67%	40%	67%
6.10		91%	90%	100%
6.11		90%	100%	100%
6.13		90%	100%	100%
6.16	, ,	100%	90%	100%
7.2		98%	90%	94%
7.7	()	90%	100%	89%
7.8	,	91%	100%	89%
7.12		95%	90%	94%
7.13		81%	70%	44%
7.15		81%	70%	44%
7.18		98%	90%	94%
8.1	.	37%	20%	22%
8.2		72%	85%	97%
8.3	-	60%	70%	67%
8.6	-	87%	78%	100%
9.1		100%	100%	94%

3.1.1.

		11	11	11
9.2		100%	100%	94%
9.3	()	100%	100%	83%
9.4	()	93%	94%	92%
10.5		66%	50%	71%

3.2.

(%

),

		. % .
		96%
9.2		98%
9.1		98%
9.3	()	94%
9.4	()	93%
		92%
2.5		92%
2.4		92%
2.3		92%
2.2	. .	92%
2.1		92%
		91%
6.7	-/- -) (-	98%
6.16	, ,	98%
6.6		98%
6.13		96%
6.11		96%
6.10		94%
6.5		90%
6.8	- - - -	61%
		85%
7.18		95%
7.2		95%
7.12		94%

		.% .
7.8	,	92%
7.7	()	92%
7.15		65%
7.13		65%
		70%
8.6	-	90%
8.2		84%
8.3	-	65%
8.1	.	28%
		65%
10.5		65%

3.2.1.

(%),

			11	11	11
	2.1		90%	80%	100%
	2.2		90%	80%	100%
	2.3		90%	80%	100%
	2.4		90%	80%	100%
	2.5		90%	80%	100%
	6.5		80%	100%	94%
	6.6		95%	100%	100%
	6.7	(- -/- -)	95%	100%	100%
	6.8	- - - -	67%	40%	67%
	6.10		91%	90%	100%
	6.11		90%	100%	100%
	6.13		90%	100%	100%
	6.16		100%	90%	100%
	7.2		98%	90%	94%
	7.7	()	90%	100%	89%
	7.8		91%	100%	89%
	7.12		95%	90%	94%
	7.13		81%	70%	44%
	7.15		81%	70%	44%
	7.18		98%	90%	94%
	8.1		37%	20%	22%
	8.2		72%	85%	97%
	8.3		60%	70%	67%
	8.6		87%	78%	100%
	9.1		100%	100%	94%
	9.2		100%	100%	94%
	9.3	()	100%	100%	83%
	9.4	()	93%	94%	92%

			11	11	11
	10.5		66%	50%	71%

3.3.

%

		. % .
3.1	- , - (;	90%
3.2	' , ;	90%
3.3		90%
3.4	, D53	90%
1.1	'	87%
1.4	, , - ,	83%
2.3		79%
2.1	, - (.) -	76%
1.2	; ,	65%
1.3	'	65%
2.2	: - , ;	62%

3.3.1.

		11	11	11
1.1		87%	86%	89%
1.2		66%	50%	71%
1.3		66%	50%	71%
1.4		77%	80%	92%
2.1		76%	70%	80%
2.2		64%	53%	64%
2.3		77%	70%	85%
3.1		87%	78%	100%
3.2		87%	78%	100%
3.3		87%	78%	100%
3.4	, D53	87%	78%	100%

3.4. (%,),

		.% .
		90%
3.4	, D53	90%
3.3		90%
3.2	, ;	90%
3.1	- , - (;)	90%
		85%
1.1	,	87%
1.4	, , - ,	83%
1.3	,	65%
1.2	, ;	65%
		73%
2.3		79%
2.1	, - (.) -	76%
2.2	: - , ,	62%

3.4.1.

(%) ,

			11	11	11
	1.1		87%	86%	89%
	1.2		66%	50%	71%
	1.3		66%	50%	71%
	1.4		77%	80%	92%
	2.1		76%	70%	80%
	2.2		64%	53%	64%
	2.3		77%	70%	85%
	3.1		87%	78%	100%
	3.2		87%	78%	100%
	3.3		87%	78%	100%
	3.4	, D53	87%	78%	100%

4.

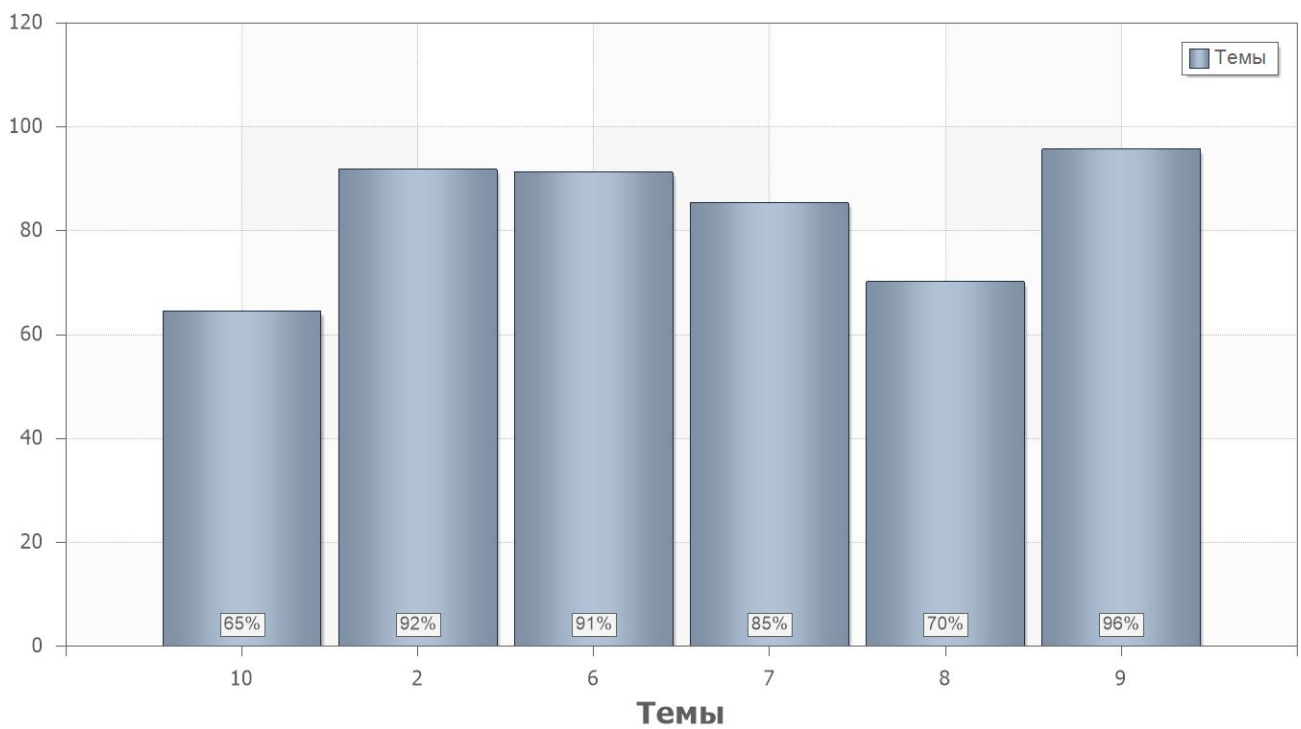
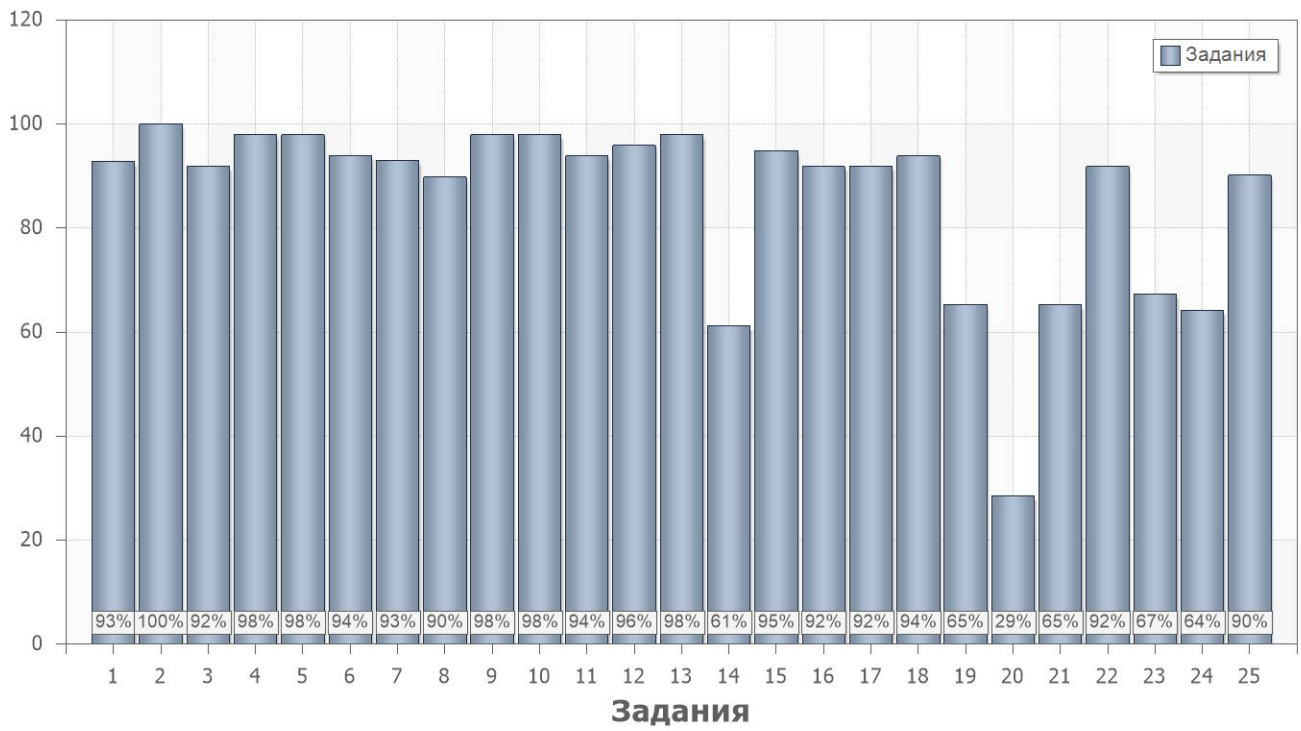
4.1.

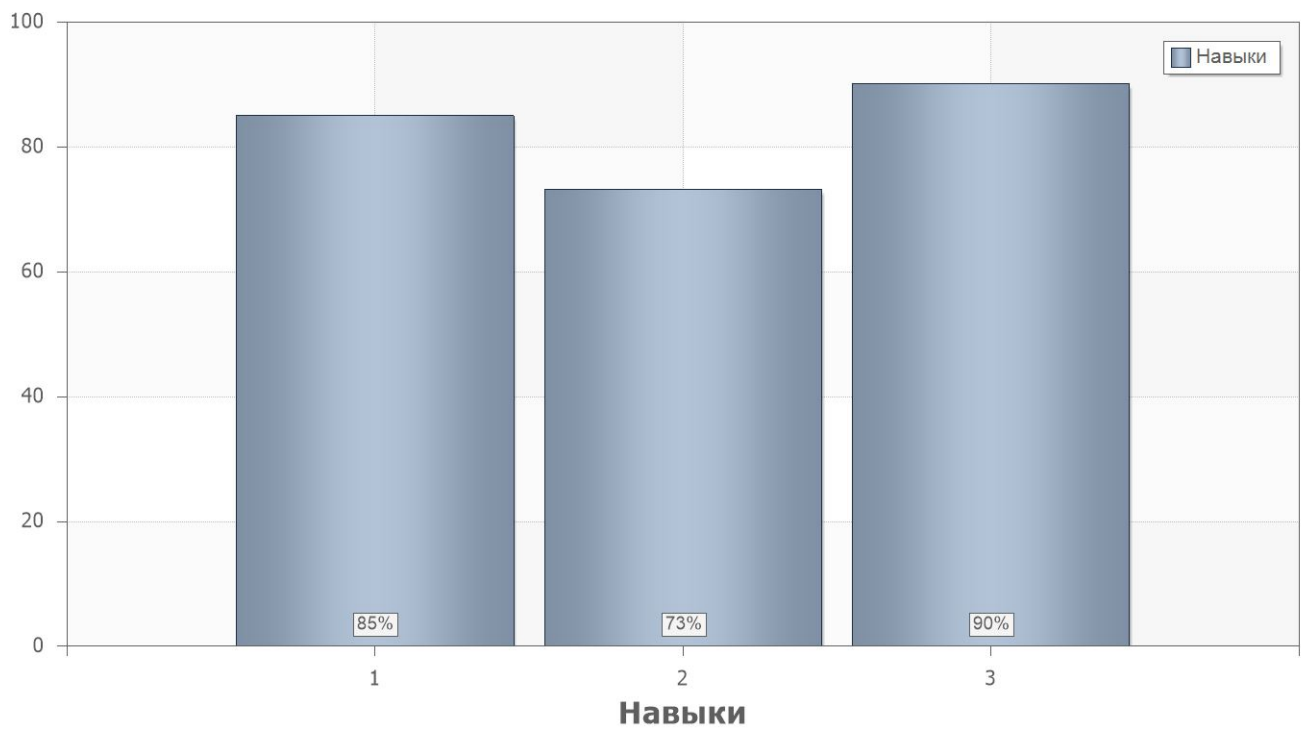
	. % .
2	86
1	85

4.2.

	. % .		
1			
1	93	11	2.1;2.2;2.3
2	100	8.2	1.4;2.1
3	92	2.1	1.1;1.4;2.1
4	98	9.1	1.1
5	98	9.2	1.1
6	94	9.3	1.1
7	93	9.4	1.1
8	90	6.5	1.1
9	98	6.6	1.1
10	98	6.7	1.1
11	94	6.10	1.1
12	96	6.11;6.13	1.1
13	98	6.16	1.1
14	61	6.8	1.1
15	95	7.2;7.18	1.1
16	92	7.7	1.1
17	92	7.8	1.1
18	94	7.12	1.1
19	65	7.13;7.15	1.1

	. % .		
20	29	8.1	2.1;2.2
21	65	8.3	1.1;1.4;2.1
22	92	2.1;2.2;2.3;2.4;2.5	1.1;1.4;2.1
23	67	8.2	1.1;1.4
24	64	10.5	1.1;1.2;1.3;2.1;2.2;2.3
2			
25	90	11;8.6	3.1;3.2;3.3;3.4





4.3.

Name	11	11	11
1	86%	81%	87%
2	84%	84%	90%

4.4.

PartIndex	Number	11	11	11
1	1	88%	90%	100%
	2	100%	100%	100%
	3	90%	80%	100%
	4	100%	100%	94%
	5	100%	100%	94%
	6	100%	100%	83%
	7	93%	94%	92%
	8	81%	100%	94%
	9	95%	100%	100%
	10	95%	100%	100%
	11	90%	90%	100%
	12	90%	100%	100%
	13	100%	90%	100%
	14	67%	40%	67%
	15	98%	90%	94%
	16	90%	100%	89%
	17	90%	100%	89%
	18	95%	90%	94%
	19	81%	70%	44%
	20	38%	20%	22%
	21	62%	70%	67%
	22	90%	80%	100%
	23	43%	70%	94%
	24	65%	50%	71%
2	25	88%	78%	100%