

ABBYY®

1.				3
1.1.				3
2.				4
2.1.				4
2.2.				4
3.				6
3.1.				5
	%			
3.1.1.				8
3.2.		(%),	9
3.2.1.		(%),	11
3.3.				13
	%			
3.3.1.				14
3.4.		(%),	15
3.4.1.		(%)	16
	,			
4.				17
4.1.				17
4.2.				17
4.3.				20
4.4.				20

1.

1.1 Общие характеристики проведённой работы

1

07/9/2016 - 21/9/2016 .

- ,

80

12.29

17

72%

2.

2.1.

	-	.	%
17	80	12.29	72%
	720	8.85	52%
" "	10903	8.95	53%
	14976	9.28	55%

2.2.

	-	.	%
9	29	12.90	76%
9	26	9.62	57%
9	25	14.36	84%
17	80	12.29	72%

3.1.

%

		.% .
8.1	.	94%
6.10		94%
6.7	(- -/ - -)	94%
6.8	- - - -	94%
6.1		91%
7.18		91%
8.4	, ,	91%
8.6	-	91%
9.2		91%
9.3	()	91%
9.4	()	91%
6.16	, ,	82%
6.6		82%
10.1		77%
5.1		75%
7.8	,	71%
2.2	. .	67%
2.4		67%
5.7		65%
7.2		65%
7.3		65%
7.4		65%

7.5		65%
7.7	()	65%
7.19		63%
5.13		58%
5.2	()	56%
5.8		42%
7.11		42%
7.12		42%

3.1.1.

		9	9	9
2.2		93%	38%	68%
2.4		93%	38%	68%
5.1		93%	31%	100%
5.2	()	55%	40%	72%
5.7		64%	52%	80%
5.8		52%	12%	62%
5.13		50%	42%	85%
6.1		92%	85%	96%
6.6		86%	65%	96%
6.7	(- -/ -)	100%	85%	96%
6.8	- - - -	100%	85%	96%
6.10		100%	85%	96%
6.16	,	86%	65%	96%
7.2		64%	52%	80%
7.3		64%	52%	80%
7.4		64%	52%	80%
7.5		64%	52%	80%
7.7	()	64%	52%	80%
7.8	,	76%	52%	84%
7.11		52%	12%	62%
7.12		52%	12%	62%
7.18		92%	85%	96%
7.19		66%	44%	78%
8.1		93%	92%	98%
8.4	,	92%	85%	96%

3.1.1.

		9	9	9
8.6	-	92%	85%	96%
9.2		92%	85%	96%
9.3	()	92%	85%	96%
9.4	()	92%	85%	96%
10.1		75%	69%	88%

3.2.

(%

),

		. % .
		92%
8.1	.	94%
8.6	-	91%
8.4	,	91%
		91%
9.4	()	91%
9.3	()	91%
9.2		91%
		90%
6.10		94%
6.8	- - - -	94%
6.7	-/- -) (-	94%
6.1		91%
6.16	,	82%
6.6		82%
		77%
10.1		77%
		67%
2.4		67%
2.2	.	67%
		64%
7.18		91%
7.8	,	71%

		. % .
7.7	()	65%
7.5		65%
7.4		65%
7.3		65%
7.2		65%
7.19		63%
7.12		42%
7.11		42%
.		59%
5.1		75%
5.7		65%
5.13		58%
5.2	. () .	56%
5.8		42%

3.2.1.

(%),

			9	9	9
	2.2		93%	38%	68%
	2.4		93%	38%	68%
	5.1		93%	31%	100%
	5.2	()	55%	40%	72%
	5.7		64%	52%	80%
	5.8		52%	12%	62%
	5.13		50%	42%	85%
	6.1		92%	85%	96%
	6.6		86%	65%	96%
	6.7	(- -/ - -)	100%	85%	96%
	6.8	- - - -	100%	85%	96%
	6.10		100%	85%	96%
	6.16	, ,	86%	65%	96%
	7.2		64%	52%	80%
	7.3		64%	52%	80%
	7.4		64%	52%	80%
	7.5		64%	52%	80%
	7.7	()	64%	52%	80%
	7.8	,	76%	52%	84%
	7.11		52%	12%	62%
	7.12		52%	12%	62%
	7.18		92%	85%	96%
	7.19		66%	44%	78%
	8.1	.	93%	92%	98%
	8.4	, ,	92%	85%	96%
	8.6	-	92%	85%	96%
	9.2		92%	85%	96%

			9	9	9
	9.3	()	92%	85%	96%
	9.4	()	92%	85%	96%
	10.1		75%	69%	88%

3.3.

%

		.% .
2.3	(,)	98%
2.1	(,)	94%
2.4		94%
3.1	(, ,)	91%
3.3	, ,	91%
3.5	(, , , , .)	91%
3.6	, : ,	91%
3.8		91%
3.9	(,)	91%
3.10	, , ; ;	91%
1.3	, , , -	67%
1.1	,	66%

3.3.1.

		9	9	9
1.1	,	69%	47%	82%
1.3	' , - ,	93%	38%	68%
2.1	(,)	93%	92%	98%
2.3	() ,	93%	100%	100%
2.4		93%	92%	98%
3.1) (, ,	92%	85%	96%
3.3	, ,	92%	85%	96%
3.5	' (, ,) ,	92%	85%	96%
3.6	: , ,	92%	85%	96%
3.8		92%	85%	96%
3.9	() ,	92%	85%	96%
3.10	; ; , ,	92%	85%	96%

3.4. (%,),

		.% .
		95%
2.3	(,)	98%
2.4		94%
2.1	(,)	94%
		91%
3.10	; , , ;	91%
3.9	(,)	91%
3.8		91%
3.6	: , ,	91%
3.5	(, , , , ,)	91%
3.3	, ,	91%
3.1	(, ,)	91%
		66%
1.3	, , , -	67%
1.1	,	66%

3.4.1.

(%) ,

			9	9	9
	1.1	,	69%	47%	82%
	1.3	, , - ,	93%	38%	68%
	2.1	(, ,)	93%	92%	98%
	2.3	() , ,	93%	100%	100%
	2.4		93%	92%	98%
	3.1) (, ,	92%	85%	96%
	3.3	, ,	92%	85%	96%
	3.5	, (, ,) ,	92%	85%	96%
	3.6	: , ,	92%	85%	96%
	3.8		92%	85%	96%
	3.9	() ,	92%	85%	96%
	3.10	; ; , ,	92%	85%	96%

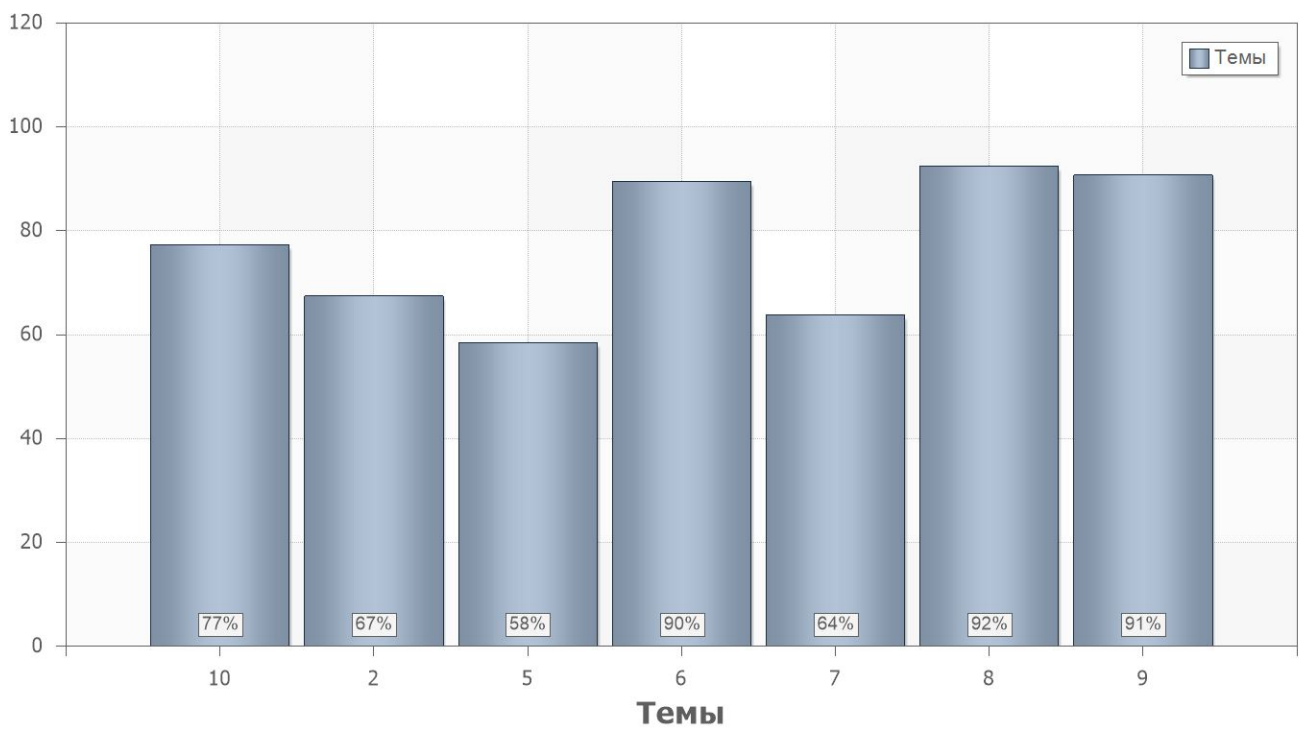
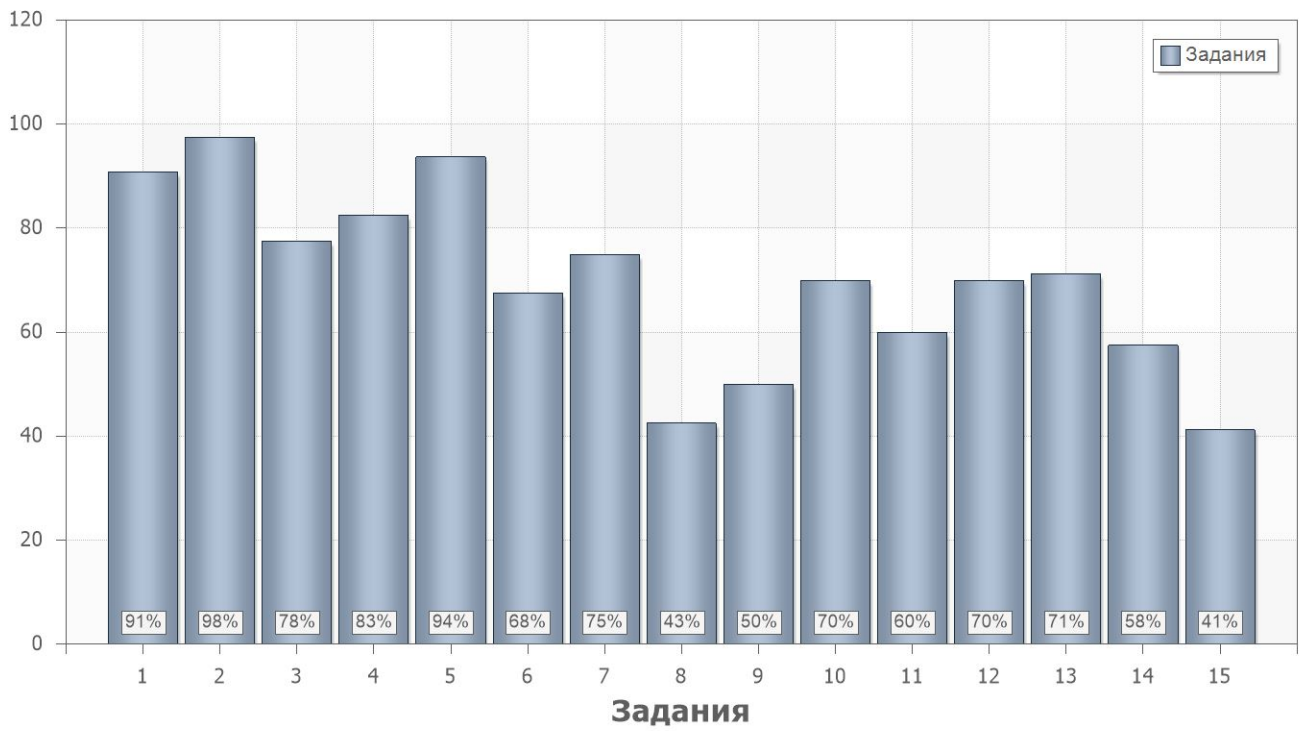
4.

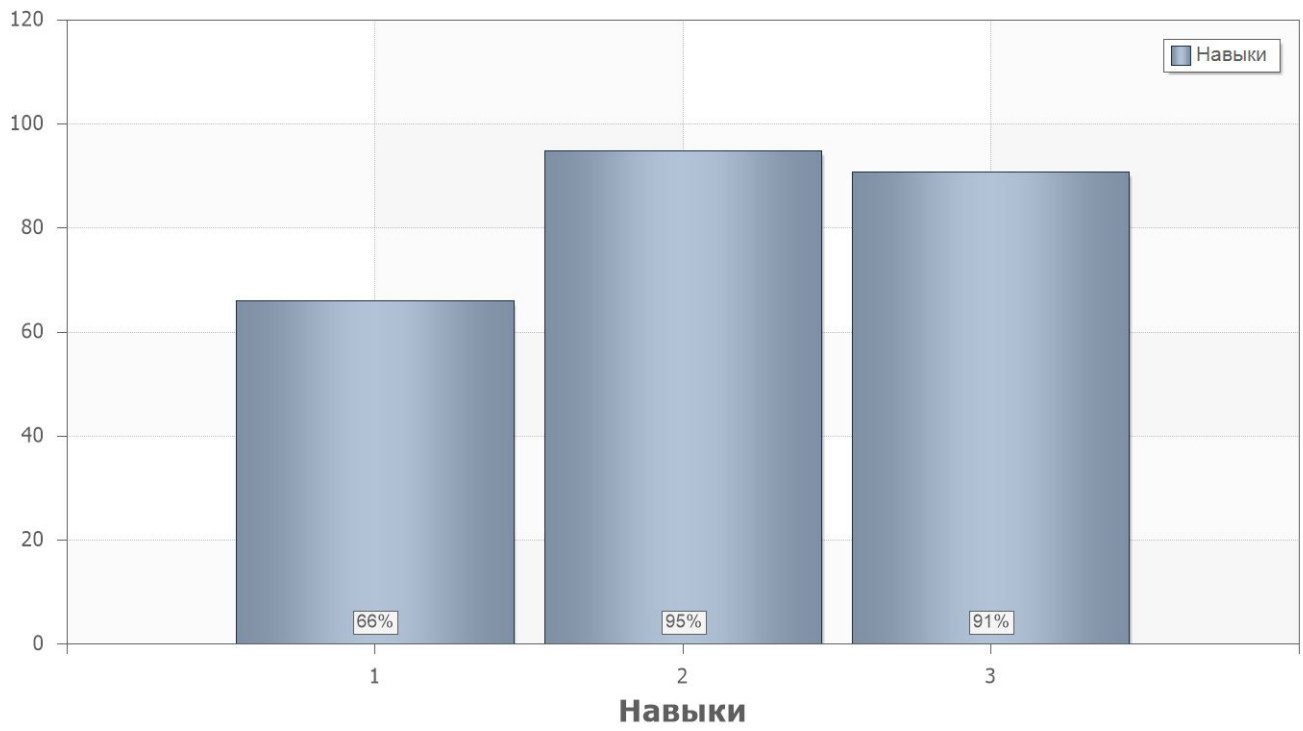
4.1.

	. % .
1	71
2	73

4.2.

	. % .		
1			
1	91	11;6.1;8.1;8.4;8.6;9.2;9.3;9.4;7.18	2.1;2.4;3.1;3.3;3.5;3.6;3.8;3.9;3.10
2	98	8.1	2.1;2.3;2.4
3	78	10.1	1.1
4	83	6.6;6.16	1.1
5	94	6.7;6.8;6.10	1.1
6	68	2.2;2.4	1.3
7	75	5.1	1.1
8	43	5.2	1.1
9	50	5.2	1.1
10	70	5.2;5.7;7.2;7.3;7.4;7.5;7.7;7.19	1.1
11	60	5.2;5.7;7.2;7.3;7.4;7.5;7.7;7.19	1.1
12	70	7.8;7.19	1.1
13	71	7.8;7.19	1.1
14	58	5.13	1.1
15	41	5.8;7.11;7.12;7.19	1.1





4.3.

Name	9	9	9
1	74%	59%	81%
2	78%	54%	88%

4.4.

PartIndex	Number	9	9	9
1	1	92%	85%	96%
	2	93%	100%	100%
	3	76%	69%	88%
	4	86%	65%	96%
	5	100%	85%	96%
	6	93%	38%	68%
	7	93%	31%	100%
	8	41%	35%	52%
	9	52%	23%	76%
	10	76%	62%	72%
	11	52%	42%	88%
	12	69%	62%	80%
	13	83%	42%	88%
	14	48%	42%	84%
	15	52%	12%	60%