

ABBYY®

1.				3
1.1.				3
2.				4
2.1.				4
2.2.				4
3.				6
3.1.				5
	%			
3.1.1.				8
3.2.		(%),	9
3.2.1.		(%),	11
3.3.				13
	%			
3.3.1.				14
3.4.		(%),	15
3.4.1.		(%)	16
	,			
4.				17
4.1.				17
4.2.				17
4.3.				21
4.4.				21

1.

1.1 Общие характеристики проведённой работы

2

13/9/2016 - 30/9/2016 .

- ,

27

17.56

35

50%

2.

2.1.

	-	.	%
17	27	17.56	50%
	385	14.35	41%
" "	5371	13.13	38%
	7447	13.93	40%

2.2.

	-	.	%
11	17	17.06	49%
11	10	18.40	53%
17	27	17.56	50%

3.1.**%**

		.% .
4.0		59%
5.0		59%
5.4		59%
3.0		59%
1.0		57%
2.0		56%
4.1		51%
4.10		51%
4.11		51%
4.12		51%
4.13		51%
4.2	,	51%
4.3		51%
4.4		51%
4.5	,	51%
4.6		51%
4.7		51%
4.8		51%
4.9		51%
4.14		42%
4.15		42%
5.1		29%
5.10		29%

5.11		29%
5.12		29%
5.13	()	29%
5.14	,	29%
5.15		29%
5.16		29%
5.17		29%
5.18	,	29%
5.19		29%
5.2	.	29%
5.20	.	29%
5.3		29%
5.5		29%
5.6	.	29%
5.7	-	29%
5.8		29%
5.9	.	29%
2.4	.	27%

3.1.1.

		11	11
1.0		53%	63%
2.0		54%	59%
2.4		13%	50%
3.0		54%	66%
4.0		54%	67%
4.1		47%	58%
4.2		47%	58%
4.3		47%	58%
4.4		47%	58%
4.5		47%	58%
4.6		47%	58%
4.7		47%	58%
4.8		47%	58%
4.9		47%	58%
4.10		47%	58%
4.11		47%	58%
4.12		47%	58%
4.13		47%	58%
4.14		50%	30%
4.15		50%	30%
5.0		54%	67%
5.1		27%	33%
5.2		27%	33%
5.3		27%	33%
5.4		64%	50%
5.5		27%	33%
5.6		27%	33%

3.1.1.

		11	11
5.7	-	27%	33%
5.8		27%	33%
5.9	.	27%	33%
5.10	.	27%	33%
5.11		27%	33%
5.12		27%	33%
5.13	()	27%	33%
5.14	,	27%	33%
5.15		27%	33%
5.16		27%	33%
5.17		27%	33%
5.18	,	27%	33%
5.19		27%	33%
5.20	.	27%	33%

3.2.

(%

),

		. % .
		59%
3.0		59%
		57%
1.0		57%
		53%
2.0		56%
2.4		27%
		52%
4.0		59%
4.13		51%
4.12		51%
4.11		51%
4.10		51%
4.9		51%
4.8		51%
4.7		51%
4.6		51%
4.5	,	51%
4.4		51%
4.3		51%
4.2	,	51%
4.1		51%
4.15		42%
4.14		42%
		34%
5.0		59%

		. % .
5.4		59%
5.20		29%
5.19		29%
5.18	,	29%
5.17		29%
5.16		29%
5.15		29%
5.14	,	29%
5.13	()	29%
5.12		29%
5.11		29%
5.10		29%
5.9		29%
5.8		29%
5.7	-	29%
5.6		29%
5.5		29%
5.3		29%
5.2		29%
5.1		29%

3.2.1.

(%),

			11	11
	1.0		53%	63%
	2.0		54%	59%
	2.4		13%	50%
	3.0		54%	66%
	4.0		54%	67%
	4.1		47%	58%
	4.2		47%	58%
	4.3		47%	58%
	4.4		47%	58%
	4.5		47%	58%
	4.6		47%	58%
	4.7		47%	58%
	4.8		47%	58%
	4.9		47%	58%
	4.10		47%	58%
	4.11		47%	58%
	4.12		47%	58%
	4.13		47%	58%
	4.14		50%	30%
4.15		50%	30%	
	5.0		54%	67%
	5.1		27%	33%
	5.2		27%	33%
	5.3		27%	33%
	5.4		64%	50%
	5.5		27%	33%
	5.6		27%	33%

			11	11
	5.7	-	27%	33%
	5.8		27%	33%
	5.9	.	27%	33%
	5.10	.	27%	33%
	5.11		27%	33%
	5.12		27%	33%
	5.13	()	27%	33%
	5.14	,	27%	33%
	5.15		27%	33%
	5.16		27%	33%
	5.17		27%	33%
	5.18	,	27%	33%
	5.19		27%	33%
	5.20	.	27%	33%

3.3.

%

		.% .
1.1	/	58%
1.2	/	58%
1.3	/	58%
1.4	/	58%
1.5	/	58%
1.6	/	58%
1.7	/	58%
1.8	/	58%
2.1)	52%
2.5);	52%
2.2	;	50%
2.9	-	41%

3.3.1.

		11	11
1.1	/	55%	63%
1.2	/	55%	63%
1.3	/	55%	63%
1.4	/	55%	63%
1.5	/	55%	63%
1.6	/	55%	63%
1.7	/	55%	63%
1.8	/	55%	63%
2.1	(, , ,),	56%	47%
2.2	;	47%	54%
2.5	(, , , -); (, , ;)	44%	65%
2.9	-	39%	44%

3.4. (%),

		.% .
	/ :	58%
1.8	/ -	58%
1.7	/ , ,	58%
1.6	/	58%
1.5	/ ,	58%
1.4	/	58%
1.3	/	58%
1.2	/	58%
1.1	/	58%
	:	49%
2.1), (, , ,	52%
2.5	,); (, , , - , , , ; , ; ,	52%
2.2	, ; -	50%
2.9	-	41%

3.4.1.

(%) ,

			11	11
/ :	1.1	/	55%	63%
	1.2	/	55%	63%
	1.3	/	55%	63%
	1.4	/	55%	63%
	1.5	/ ,	55%	63%
	1.6	/	55%	63%
	1.7	/ ,	55%	63%
	1.8	/ -	55%	63%
:	2.1	(, , ,),	56%	47%
	2.2	;	47%	54%
	2.5	(, , , ,); , - (, , , ,); , ;	44%	65%
	2.9	-	39%	44%

4.

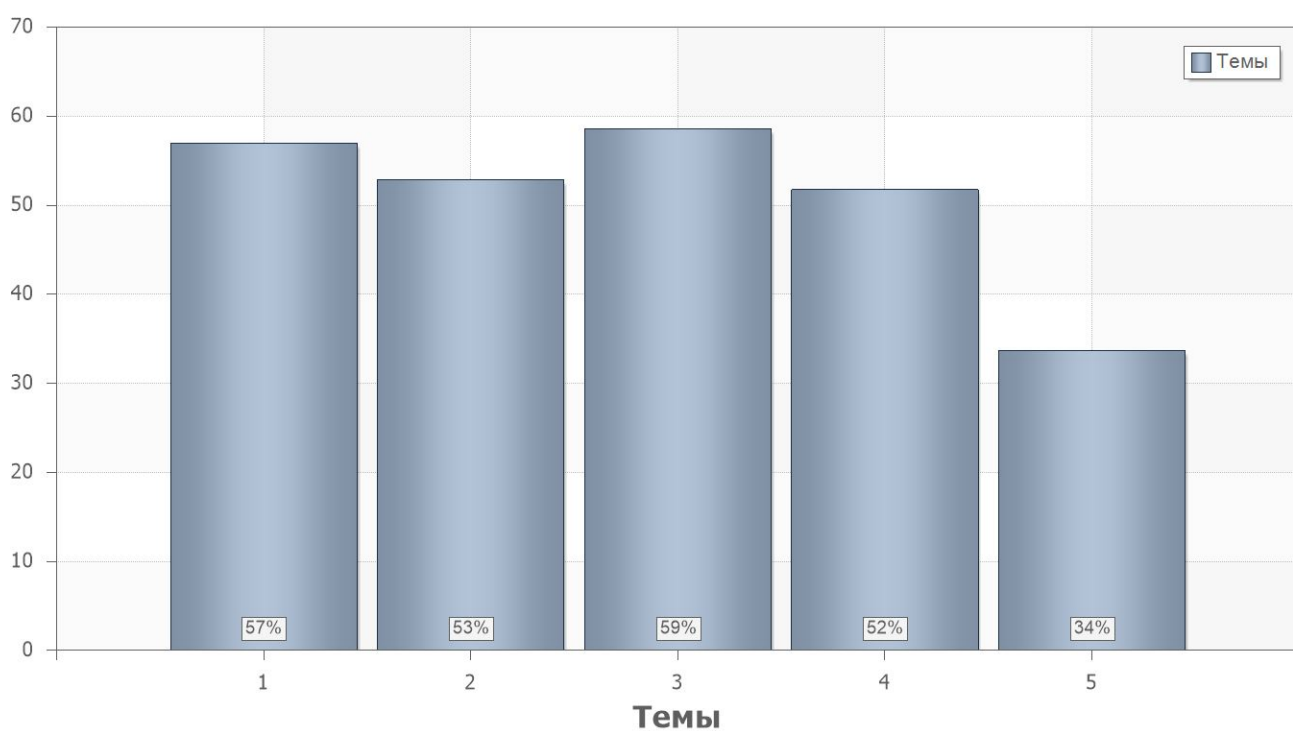
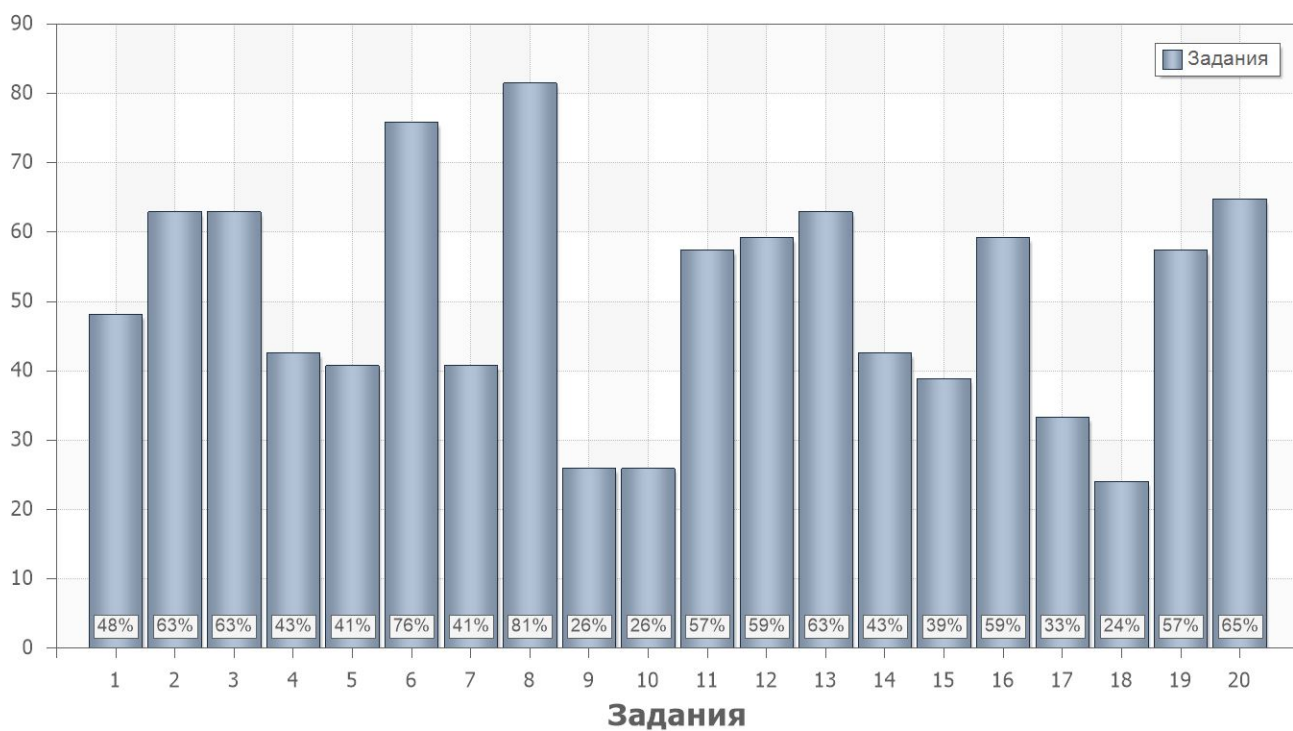
4.1.

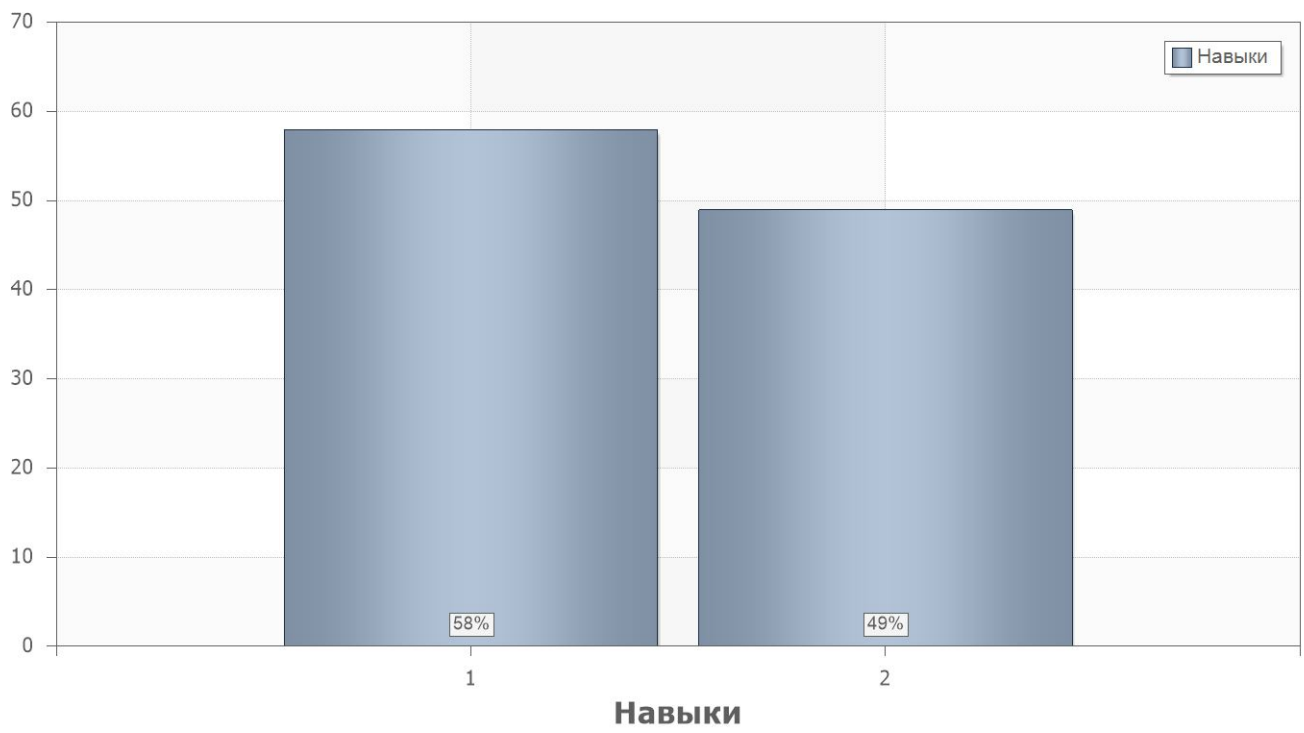
	. % .
2	48
1	52

4.2.

	. % .		
1			
1	48	1.0;2.0;3.0;4.0;5.0	1.1;1.2;1.3;1.4;1.5;1.6;1.7; 1.8
2	63	1.0;2.0;3.0;4.0;5.0	1.1;1.2;1.3;1.4;1.5;1.6;1.7; 1.8
3	63	1.0;2.0;3.0;4.0;5.0	1.1;1.2;1.3;1.4;1.5;1.6;1.7; 1.8
4	43	1.0	2.1
5	41	1.0	2.2
6	76	1.0	2.9
7	41	2.0	2.1
8	81	2.0	2.2
9	26	2.0	2.9
10	26	2.4	2.5
11	57	3.0	2.1
12	59	1.0;2.0;3.0;4.0;5.0	2.5
13	63	4.1;4.2;4.3;4.4;4.5;4.6;4.7; 4.8;4.9;4.10;4.11;4.12;4.13	2.1
14	43	4.14;4.15	2.2
15	39	4.1;4.2;4.3;4.4;4.5;4.6;4.7; 4.8;4.9;4.10;4.11;4.12;4.13	2.9
16	59	5.4	2.1

	. % .		
17	33	5.1;5.2;5.3;5.5;5.6;5.7;5.8; 5.9;5.10;5.11;5.12;5.13;5.1 4;5.15;5.16;5.17;5.18;5.19; 5.20	2.2
18	24	5.1;5.2;5.3;5.5;5.6;5.7;5.8; 5.9;5.10;5.11;5.12;5.13;5.1 4;5.15;5.16;5.17;5.18;5.19; 5.20	2.9
19	57	1.0;2.0;3.0;4.0;5.0	2.5
20	65	1.0;2.0;3.0;4.0;5.0	2.5





4.3.

Name	11	11
1	52%	53%
2	45%	53%

4.4.

PartIndex	Number	11	11
1	1	47%	50%
	2	71%	50%
	3	47%	90%
	4	50%	30%
	5	26%	65%
	6	79%	70%
	7	50%	25%
	8	76%	90%
	9	32%	15%
	10	12%	50%
	11	50%	70%
	12	53%	70%
	13	65%	60%
	14	50%	30%
	15	29%	55%
	16	65%	50%
	17	35%	30%
	18	18%	35%
	19	56%	60%
	20	56%	80%