

ABBYY®

1.				3
1.1.				3
2.				4
2.1.				4
2.2.				4
3.				6
3.1.				5
	%			
3.1.1.				8
3.2.		(%),	9
3.2.1.		(%),	11
3.3.				13
	%			
3.3.1.				14
3.4.		(%),	15
3.4.1.		(%)	16
	,			
4.				17
4.1.				17
4.2.				17
4.3.				21
4.4.				21

1.

1.1 Общие характеристики проведённой работы

1

13/9/2016 - 30/9/2016 .

- ,

56

16.68

26

64%

2.

2.1.

	-	.	%
17	56	16.68	64%
	622	14.64	56%
" "	9793	14.57	56%
	13483	14.95	58%

2.2.

	-	.	%
9	22	17.09	66%
9	17	14.88	57%
9	17	17.94	69%
17	56	16.68	64%

3.1.

%

		.% .
1.4		75%
1.5	.	75%
1.6	(, ,)	75%
1.7	.	75%
1.8	,	75%
4.4		72%
4.5	.	72%
4.6		72%
4.7		72%
4.1		70%
4.2	.	70%
4.3		70%
1.1		68%
1.2		68%
1.3	,	68%
2.2		64%
3.10		58%
3.11	,	58%
3.12		58%
3.7	.	58%
3.8		58%
3.9		58%

3.1	,	56%
3.2	, ,	56%
3.3		56%
3.4	, .	56%
3.5	,	56%
3.6		56%
1.0		51%
2.0		51%
3.0		51%
4.0		51%
2.3	.	51%
2.1		50%
2.4	, . ,	50%
2.5	. . ,	50%

3.1.1.

		9	9	9
1.0		50%	41%	64%
1.1		70%	60%	72%
1.2		70%	60%	72%
1.3		70%	60%	72%
1.4		83%	68%	72%
1.5		83%	68%	72%
1.6	(, ,)	83%	68%	72%
1.7		83%	68%	72%
1.8		83%	68%	72%
2.0		50%	41%	64%
2.1		45%	53%	52%
2.2		57%	61%	76%
2.3		55%	50%	47%
2.4		45%	53%	52%
2.5		45%	53%	52%
3.0		50%	41%	64%
3.1		58%	45%	64%
3.2		58%	45%	64%
3.3		58%	45%	64%
3.4		58%	45%	64%
3.5		58%	45%	64%
3.6		58%	45%	64%
3.7		58%	47%	68%

3.1.1.

		9	9	9
3.8		58%	47%	68%
3.9		58%	47%	68%
3.10		58%	47%	68%
3.11		58%	47%	68%
3.12		58%	47%	68%
4.0		50%	41%	64%
4.1		73%	68%	69%
4.2		73%	68%	69%
4.3		73%	68%	69%
4.4		68%	74%	73%
4.5		68%	74%	73%
4.6		68%	74%	73%
4.7		68%	74%	73%

3.2.

(%

),

		.% .
		69%
1.8	,	75%
1.7	.	75%
1.6) (, ,	75%
1.5	.	75%
1.4		75%
1.3	,	68%
1.2		68%
1.1		68%
1.0		51%
		67%
4.7		72%
4.6		72%
4.5	.	72%
4.4		72%
4.3		70%
4.2	.	70%
4.1		70%
4.0		51%
		57%
3.12		58%
3.11	,	58%
3.10		58%
3.9		58%

		. % .
3.8		58%
3.7	.	58%
3.6		56%
3.5	,	56%
3.4	, .	56%
3.3		56%
3.2	, ,	56%
3.1	,	56%
3.0		51%
		53%
2.2		64%
2.0		51%
2.3	.	51%
2.5	. . ,	50%
2.4	, ,	50%
2.1	.	50%

3.2.1.

(%),

			9	9	9
	1.0		50%	41%	64%
	1.1		70%	60%	72%
	1.2		70%	60%	72%
	1.3	,	70%	60%	72%
	1.4		83%	68%	72%
	1.5	.	83%	68%	72%
	1.6	(, ,)	83%	68%	72%
	1.7	.	83%	68%	72%
	1.8	,	83%	68%	72%
	2.0		50%	41%	64%
	2.1		45%	53%	52%
	2.2		57%	61%	76%
	2.3	.	55%	50%	47%
	2.4	, ,	45%	53%	52%
	2.5	.	45%	53%	52%
	3.0		50%	41%	64%
	3.1	,	58%	45%	64%
	3.2	, ,	58%	45%	64%
	3.3		58%	45%	64%
	3.4	,	58%	45%	64%
	3.5	,	58%	45%	64%
	3.6		58%	45%	64%
	3.7	.	58%	47%	68%
	3.8		58%	47%	68%
	3.9		58%	47%	68%
	3.10		58%	47%	68%
	3.11	,	58%	47%	68%
	3.12		58%	47%	68%

			9	9	9
	4.0		50%	41%	64%
	4.1		73%	68%	69%
	4.2		73%	68%	69%
	4.3		73%	68%	69%
	4.4		68%	74%	73%
	4.5		68%	74%	73%
	4.6		68%	74%	73%
	4.7		68%	74%	73%

3.3.

%

		.% .
2.1	;	76%
2.6	,	67%
1.2	/	62%
1.3	/	62%
2.2	;	56%
1.1	/	55%
2.3	(,)	52%
2.7	(,)	44%

3.3.1.

		9	9	9
1.1	/	57%	47%	62%
1.2	/	65%	53%	66%
1.3	/	65%	53%	66%
2.1	;	81%	66%	79%
2.2	;	51%	49%	71%
2.3	(50%	46%	61%
2.6	,	74%	62%	63%
2.7	(48%	29%	52%

3.4.

(%

),

		.% .
:		61%
2.1	; ; ' -	76%
2.6	,	67%
2.2	;	56%
2.3	(') , ' ,	52%
2.7	(')	44%
/ :		60%
1.3	/	62%
1.2	/	62%
1.1	/ ,	55%

3.4.1.

(%) ,

			9	9	9
/ :	1.1	/ ,	57%	47%	62%
	1.2	/	65%	53%	66%
	1.3	/	65%	53%	66%
:	2.1	; - ' ;	81%	66%	79%
	2.2	; ' ;	51%	49%	71%
	2.3	(, ,) ,	50%	46%	61%
	2.6	,	74%	62%	63%
	2.7	(,)	48%	29%	52%

4.

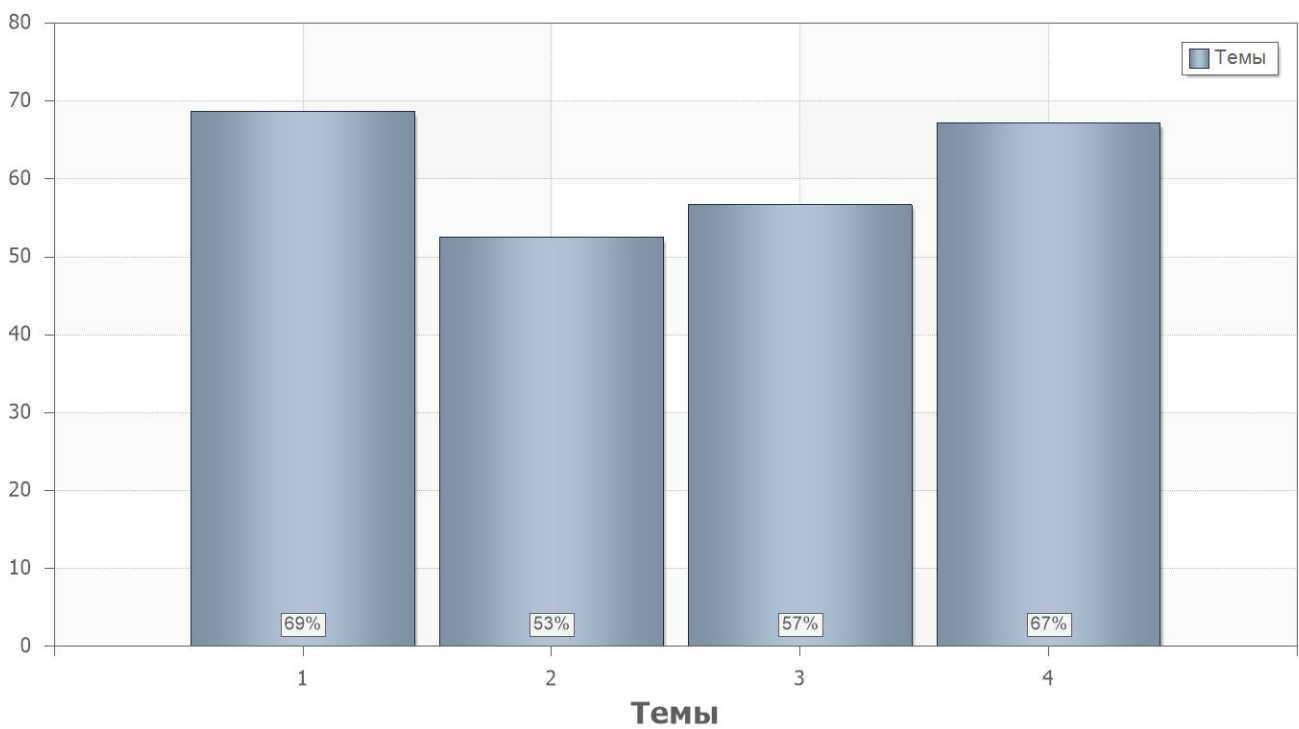
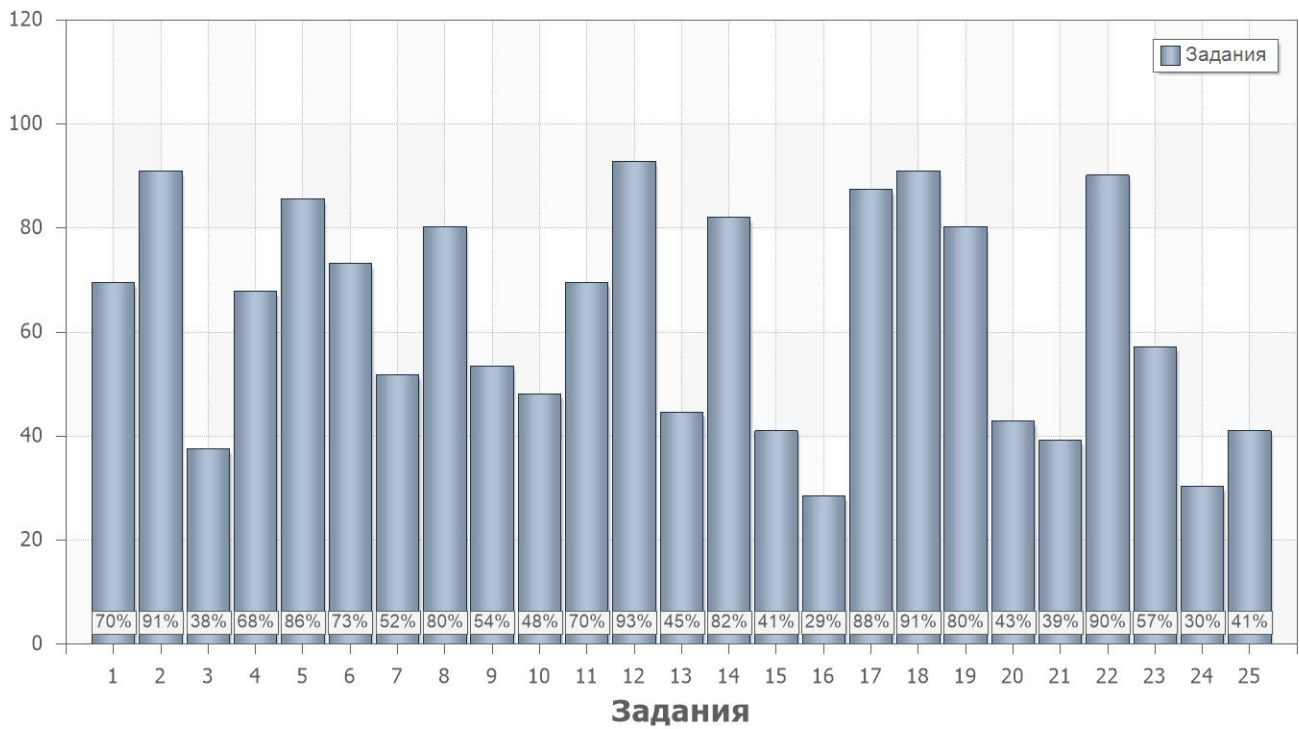
4.1.

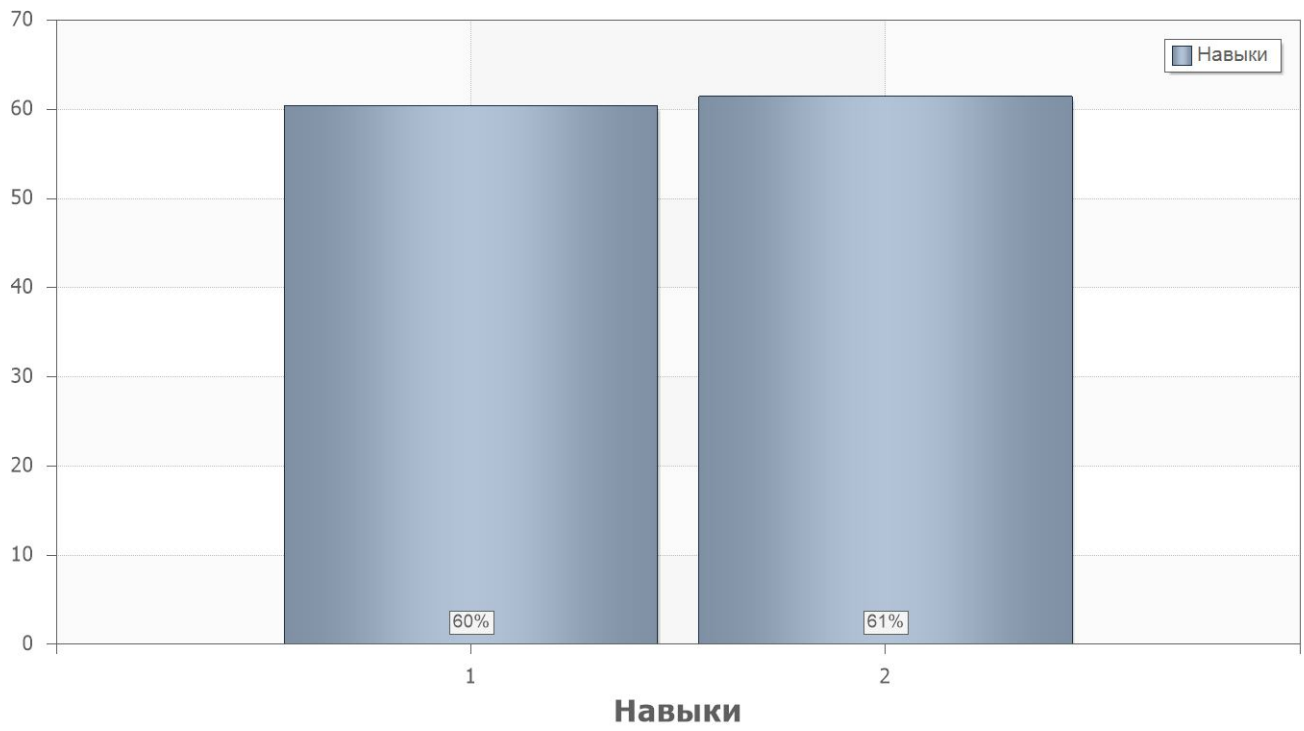
	. % .
2	68
1	60

4.2.

	. % .		
1			
1	70	1.1;1.2;1.3	1.2;1.3;2.1
2	91	1.1;1.2;1.3	2.6
3	38	1.1;1.2;1.3	1.1;1.2;1.3;2.3
4	68	1.4;1.5;1.6;1.7;1.8	1.2;1.3;2.1
5	86	1.4;1.5;1.6;1.7;1.8	2.6
6	73	1.1;1.2;1.3;1.4;1.5;1.6;1.7; 1.8	1.1;1.2;1.3;2.3
7	52	2.1;2.4;2.5	2.1;2.6
8	80	2.2	2.1
9	54	2.3	2.6
10	48	2.1;2.2;2.3;2.4;2.5	2.3
11	70	3.1;3.2;3.3;3.4;3.5;3.6	2.1
12	93	3.7;3.8;3.9;3.10;3.11;3.12	2.1
13	45	3.1;3.2;3.3;3.4;3.5;3.6;3.7; 3.8;3.9;3.10;3.11;3.12	2.3
14	82	3.1;3.2;3.3;3.4;3.5;3.6;3.7; 3.8;3.9;3.10;3.11;3.12	2.3
15	41	3.7;3.8;3.9;3.10;3.11;3.12	2.6
16	29	3.1;3.2;3.3;3.4;3.5;3.6;3.7; 3.8;3.9;3.10;3.11;3.12	2.3
17	88	4.1;4.2;4.3	2.1
18	91	4.4;4.5;4.6;4.7	2.1

	. % .		
19	80	4.1;4.2;4.3;4.4;4.5;4.6;4.7	2.6
20	43	4.1;4.2;4.3;4.4;4.5;4.6;4.7	2.3
21	39	1.0;2.0;3.0;4.0	2.2
22	90	1.0;2.0;3.0;4.0	2.2;2.3
23	57	1.0;2.0;3.0;4.0	2.3;2.7
24	30	1.0;2.0;3.0;4.0	2.3;2.7
25	41	1.0;2.0;3.0;4.0	2.2;2.3





4.3.

Name	9	9	9
1	65%	48%	66%
2	66%	66%	71%

4.4.

PartIndex	Number	9	9	9
1	1	73%	59%	76%
	2	95%	88%	88%
	3	32%	35%	47%
	4	73%	65%	65%
	5	95%	82%	76%
	6	82%	59%	76%
	7	59%	47%	47%
	8	82%	65%	94%
	9	77%	41%	35%
	10	32%	59%	59%
	11	77%	65%	65%
	12	100%	76%	100%
	13	36%	24%	76%
	14	91%	65%	88%
	15	36%	41%	47%
	16	27%	29%	29%
	17	100%	71%	88%
	18	86%	88%	100%
	19	82%	76%	82%
	20	36%	59%	35%
	21	36%	24%	59%
	22	89%	85%	97%
	23	64%	35%	71%
	24	32%	24%	35%
	25	27%	41%	59%