

ABBYY®

1.				3
1.1.				3
2.				4
2.1.				4
2.2.				4
3.				5
3.1.				5
		%		5
3.1.1.				6
3.2.			(% ,)	7
3.2.1.			(% ,)	9
3.3.				10
		%		10
3.3.1.				11
3.4.			(% ,)	12
3.4.1.			(%)	14
	,			14
4.				16
4.1.				16
4.2.				16
4.3.				19
4.4.				19

1.

1.1 Общие характеристики проведённой работы

2

09/9/2016 - 30/9/2016 .

()

- ,

49

13.41

15

89%

2.

2.1.

	-	.	%
17	49	13.41	89%
	444	10.35	69%
" "	5947	10.30	69%
	8401	10.73	72%

2.2.

	-	.	%
11	21	12.95	86%
11	10	13.40	89%
11	18	13.94	93%
17	49	13.41	89%

3.1.

%

		.% .
3.1.3	.	98%
3.2.1	.	98%
3.2.6		98%
1.4.2	,	97%
6.2.1		97%
1.1.4		96%
1.1.5	n > 1	94%
1.4.3	,	94%
1.1.3	, ,	92%
5.1.4		92%
5.5.3	, , ,	92%
5.1.1		92%
5.5.1	, ,	92%
6.3.1		90%
1.1.1		89%
2.1.12	. ,	79%
1.4.1	,	70%

3.1.1.

		11	11	11
1.1.1		81%	95%	94%
1.1.3		87%	95%	97%
1.1.4		95%	90%	100%
1.1.5	n > 1	95%	90%	94%
1.4.1		62%	67%	81%
1.4.2		97%	93%	100%
1.4.3		95%	90%	94%
2.1.12		72%	82%	86%
3.1.3		98%	100%	97%
3.2.1		95%	100%	100%
3.2.6		95%	100%	100%
5.1.1		95%	80%	94%
5.1.4		86%	90%	100%
5.5.1		85%	90%	100%
5.5.3		91%	85%	97%
6.2.1		97%	97%	98%
6.3.1		95%	90%	83%

3.2.

(%

),

		. % .
		98%
3.1.3	.	98%
		98%
3.2.6		98%
3.2.1	.	98%
		97%
6.2.1		97%
,		92%
1.1.4		96%
1.1.5	n > 1	94%
1.1.3	, ,	92%
1.1.1		89%
		92%
5.1.4		92%
5.1.1		92%
		92%
5.5.3	, , ,	92%
5.5.1	, ,	92%
		90%
6.3.1		90%
		86%
1.4.2	,	97%
1.4.3	,	94%
1.4.1	,	70%

		.% .
		79%
2.1.12	.	79%

3.2.1.

(%),

			11	11	11
	1.1.1		81%	95%	94%
	1.1.3		87%	95%	97%
	1.1.4		95%	90%	100%
	1.1.5	n > 1	95%	90%	94%
	1.4.1		62%	67%	81%
	1.4.2		97%	93%	100%
	1.4.3		95%	90%	94%
	2.1.12		72%	82%	86%
	3.1.3		98%	100%	97%
	3.2.1		95%	100%	100%
	3.2.6		95%	100%	100%
	5.1.1		95%	80%	94%
	5.1.4		86%	90%	100%
	5.5.1		85%	90%	100%
	5.5.3		91%	85%	97%
	6.2.1		97%	97%	98%
	6.3.1		95%	90%	83%

3.3.

%

		. % .
6.2	;	98%
3.3	,	98%
6.3	;	96%
1.1	;	96%
4.1	(, ,)	92%
5.2	;	92%
5.4	,	90%
6.1	;	88%
5.3	,	86%
5.1	;	77%

3.3.1.

		11	11	11
1.1	;	95%	93%	98%
3.3		95%	100%	100%
4.1	(, ,)	89%	87%	98%
5.1	;	68%	73%	89%
5.2	;	95%	80%	94%
5.3	,	91%	100%	72%
5.4	,	95%	90%	83%
6.1	;	81%	90%	94%
6.2	;	98%	100%	97%
6.3	,	90%	100%	100%

3.4. (%,),

		.% .
		98%
3.3	,	98%
		96%
1.1	; ,	96%
		93%
6.2	; ,	98%
6.3	, ,	96%
6.1	; ;	88%
	,	92%
4.1	(, ,)	92%
		83%
5.2	, ;	92%
5.4	,	90%
5.3	, ,	86%

		.% .
5.1	,	77%

3.4.1.

(%) ,

			11	11	11
	1.1	;	95%	93%	98%
	3.3	,	95%	100%	100%
	4.1	(, ,)	89%	87%	98%
	5.1	;	68%	73%	89%
	5.2	;	95%	80%	94%
	5.3	,	91%	100%	72%
	5.4	,	95%	90%	83%
	6.1	;	81%	90%	94%
	6.2	;	98%	100%	97%

	6.3	, ' - ,	90%	100%	100%
--	-----	---------	-----	------	------

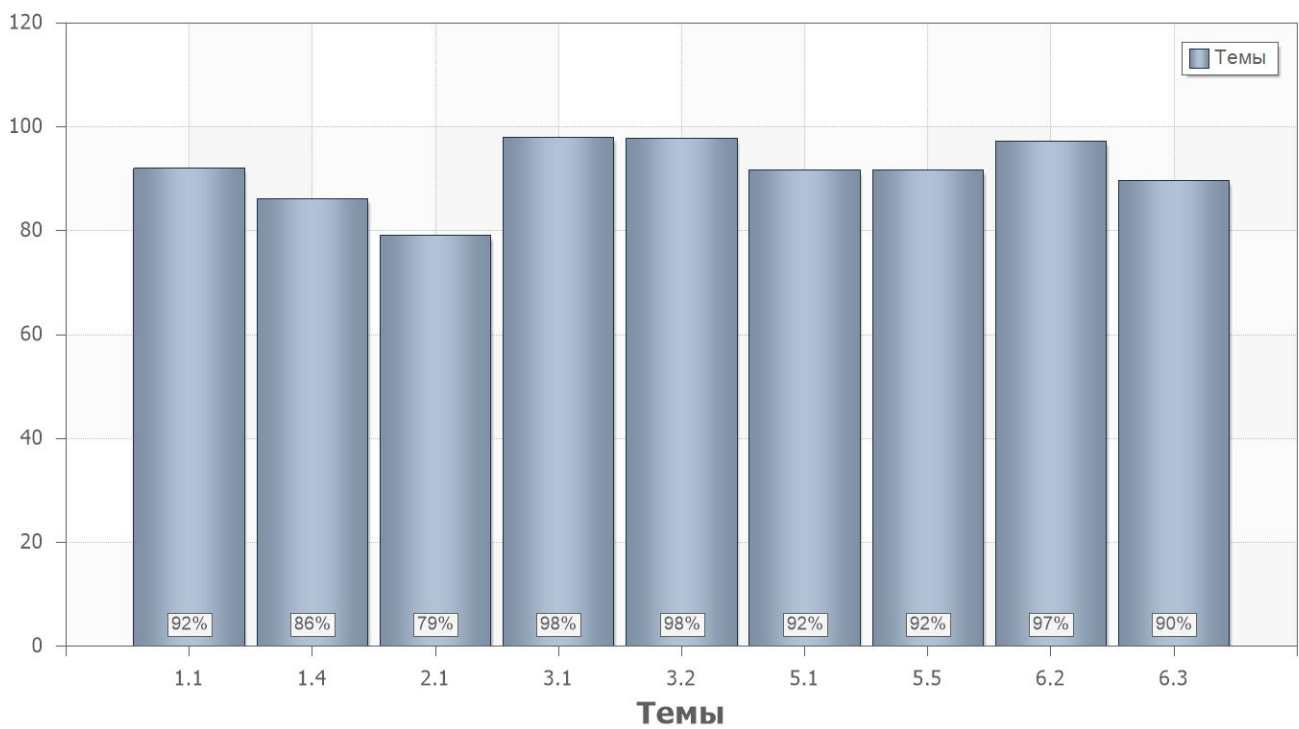
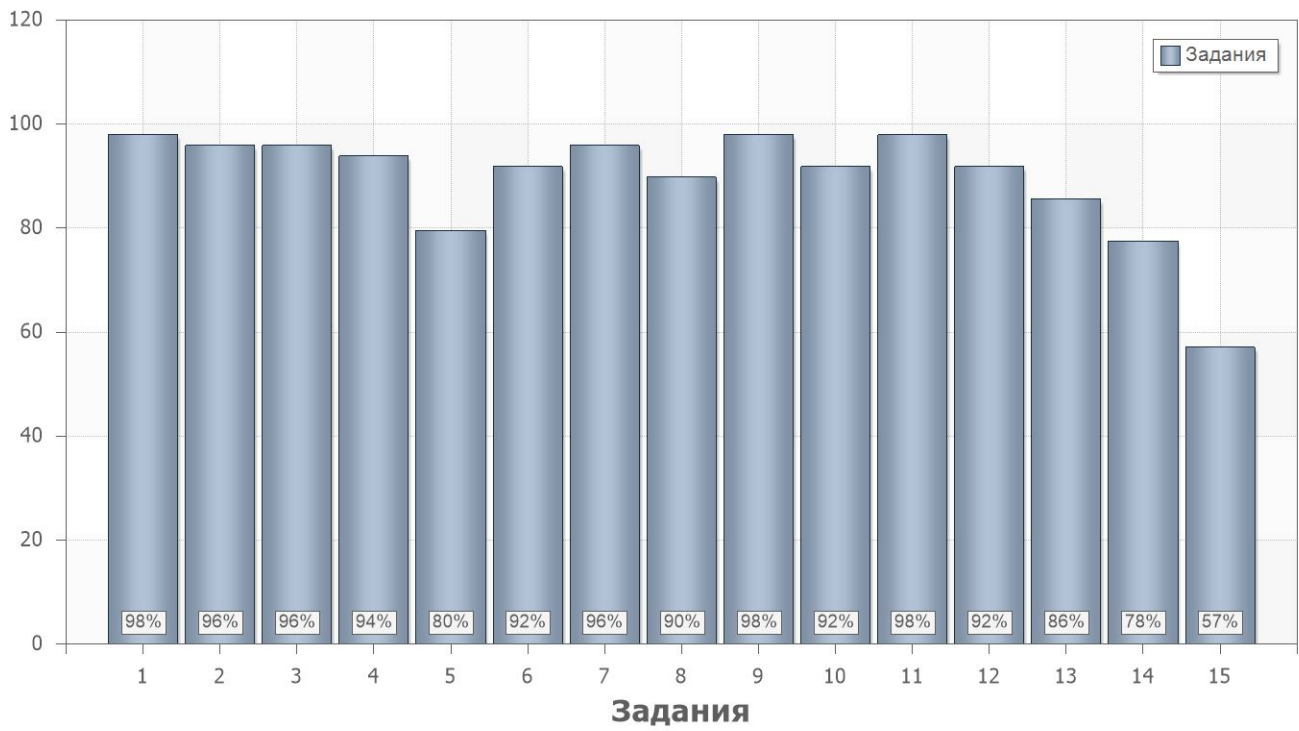
4.

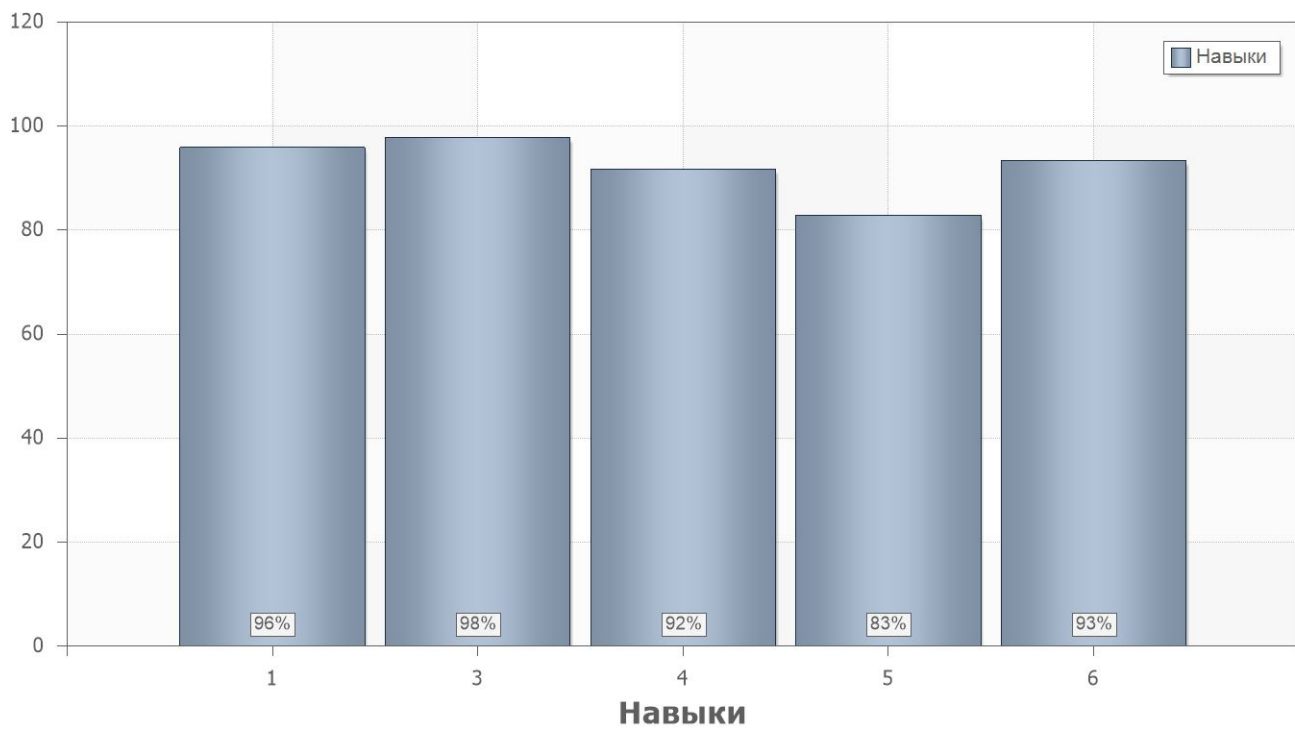
4.1.

	. % .
1	88
2	91

4.2.

	. % .		
1			
1	98	1.1.1;1.1.3;1.4.1	1.1
2	96	1.1.3;1.1.4;1.4.2	1.1
3	96	1.1.3	6.3
4	94	1.1.5;1.4.3	1.1
5	80	1.1.1;1.1.3;2.1.12	6.1
6	92	5.1.1;5.5.3	4.1;5.2
7	96	6.2.1;2.1.12	5.1;6.1
8	90	6.3.1	5.4
9	98	3.1.3;6.2.1	6.2
10	92	5.1.4;5.5.3	4.1
11	98	3.1.3;3.2.1;3.2.6;6.2.1	3.3;6.2
12	92	5.5.1	4.1
13	86	2.1.12	5.3
14	78	2.1.12	5.1
15	57	1.4.1;2.1.12	5.1





4.3.

Name	11	11	11
1	86%	81%	93%
2	87%	97%	93%

4.4.

PartIndex	Number	11	11	11
1	1	95%	100%	100%
	2	95%	90%	100%
	3	90%	100%	100%
	4	95%	90%	94%
	5	67%	90%	89%
	6	95%	80%	94%
	7	95%	90%	100%
	8	95%	90%	83%
	9	100%	100%	94%
	10	86%	90%	100%
	11	95%	100%	100%
	12	86%	90%	100%
	13	90%	100%	72%
	14	62%	80%	94%
	15	48%	50%	72%