

ABBYY®

1.				3
1.1.				3
2.				4
2.1.				4
2.2.				4
3.				5
3.1.				5
		%		5
3.1.1.				6
3.2.			(% ,)	7
3.2.1.			(% ,)	8
3.3.				9
		%		9
3.3.1.				10
3.4.			(% ,)	11
3.4.1.			(%)	12
	,			12
4.				14
4.1.				14
4.2.				14
4.3.				17
4.4.				17

1.

1.1 Общие характеристики проведённой работы

1

09/9/2016 - 30/9/2016 .

()

- ,

78

9.58

15

64%

2.

2.1.

	-	.	%
17	78	9.58	64%
	699	7.10	47%
" "	10825	7.65	51%
	14951	7.78	52%

2.2.

	-	.	%
9	30	8.50	57%
9	24	7.96	53%
9	24	12.54	84%
17	78	9.58	64%

3.1.

%

		.% .
6.0		75%
1.0		70%
8.0		69%
5.0		69%
7.0		63%
3.0		61%
2.0		52%

3.1.1.

	9	9	9
1.0	71%	58%	79%
2.0	45%	33%	79%
3.0	54%	47%	83%
5.0	71%	51%	83%
6.0	81%	55%	88%
7.0	49%	57%	87%
8.0	65%	65%	79%

3.2.

(%

),

		. % .
		75%
6.0		75%
		70%
1.0		70%
		69%
8.0		69%
		69%
5.0		69%
		63%
7.0		63%
		61%
3.0		61%
		52%
2.0		52%

3.2.1.

(%),

			9	9	9
	1.0		71%	58%	79%
	2.0		45%	33%	79%
	3.0		54%	47%	83%
	5.0		71%	51%	83%
	6.0		81%	55%	88%
	7.0		49%	57%	87%
	8.0		65%	65%	79%

3.3.**%**

		. % .
1.0		75%
4.0		69%
7.0	,	65%
5.0	,	64%
7.8	,	63%
3.0	,	62%
2.0		39%

3.3.1.

		9	9	9
1.0		77%	61%	85%
2.0		31%	17%	71%
3.0		52%	45%	92%
4.0		71%	51%	83%
5.0		48%	58%	90%
7.0		63%	52%	78%
7.8		33%	79%	83%

3.4.**(%****),**

		. % .
		75%
1.0		75%
		69%
4.0		69%
	,	64%
7.0	,	65%
7.8	,	63%
	,	64%
5.0	,	64%
	,	62%
3.0	,	62%
		39%
2.0		39%

3.4.1.

(%) ,

			9	9	9
	1.0		77%	61%	85%
	2.0		31%	17%	71%
,	3.0	,	52%	45%	92%
	4.0		71%	51%	83%
,	5.0	,	48%	58%	90%
	7.0	,	63%	52%	78%

	7.8		33%	79%	83%
--	-----	--	-----	-----	-----

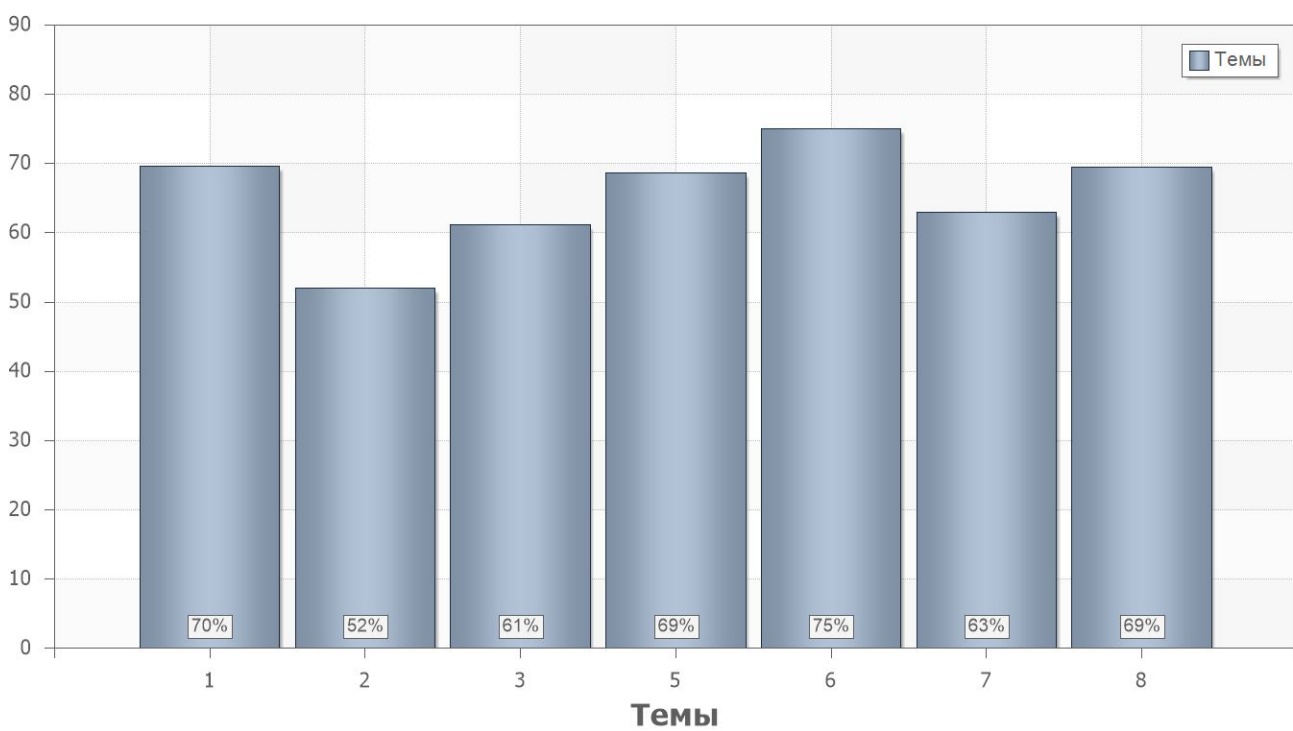
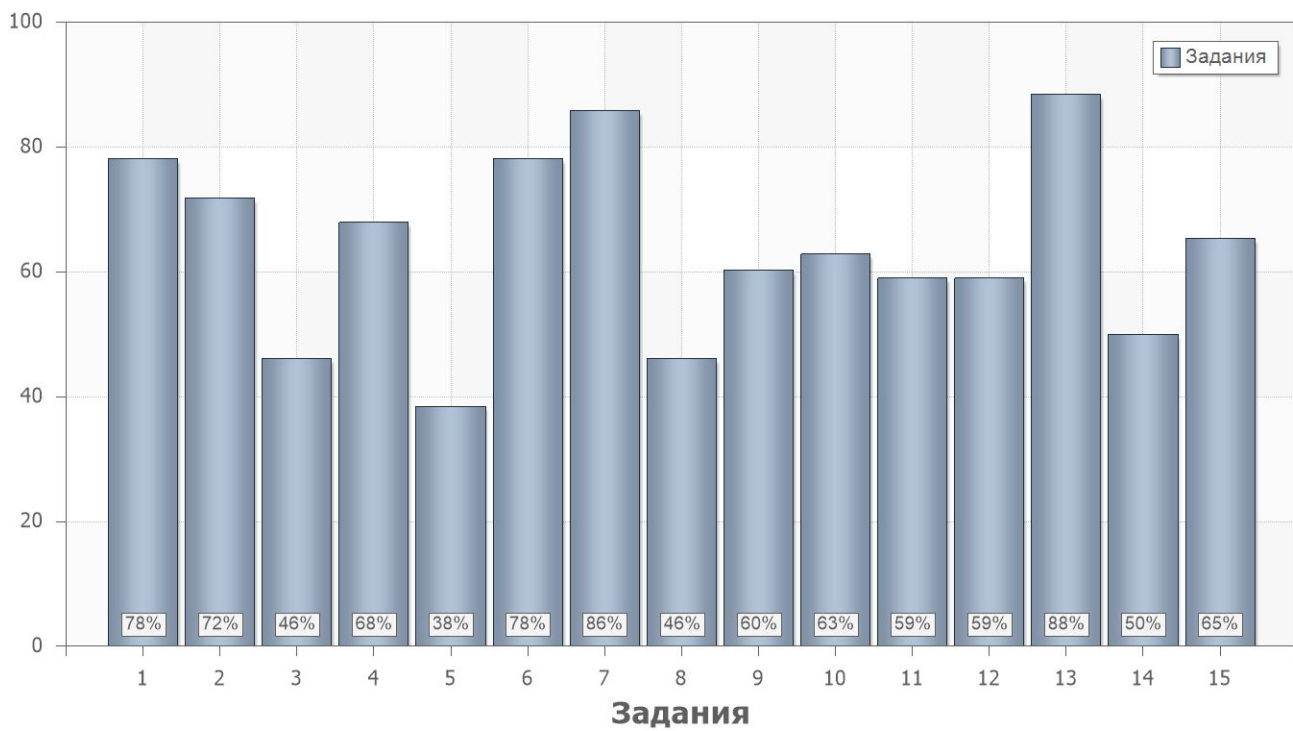
4.

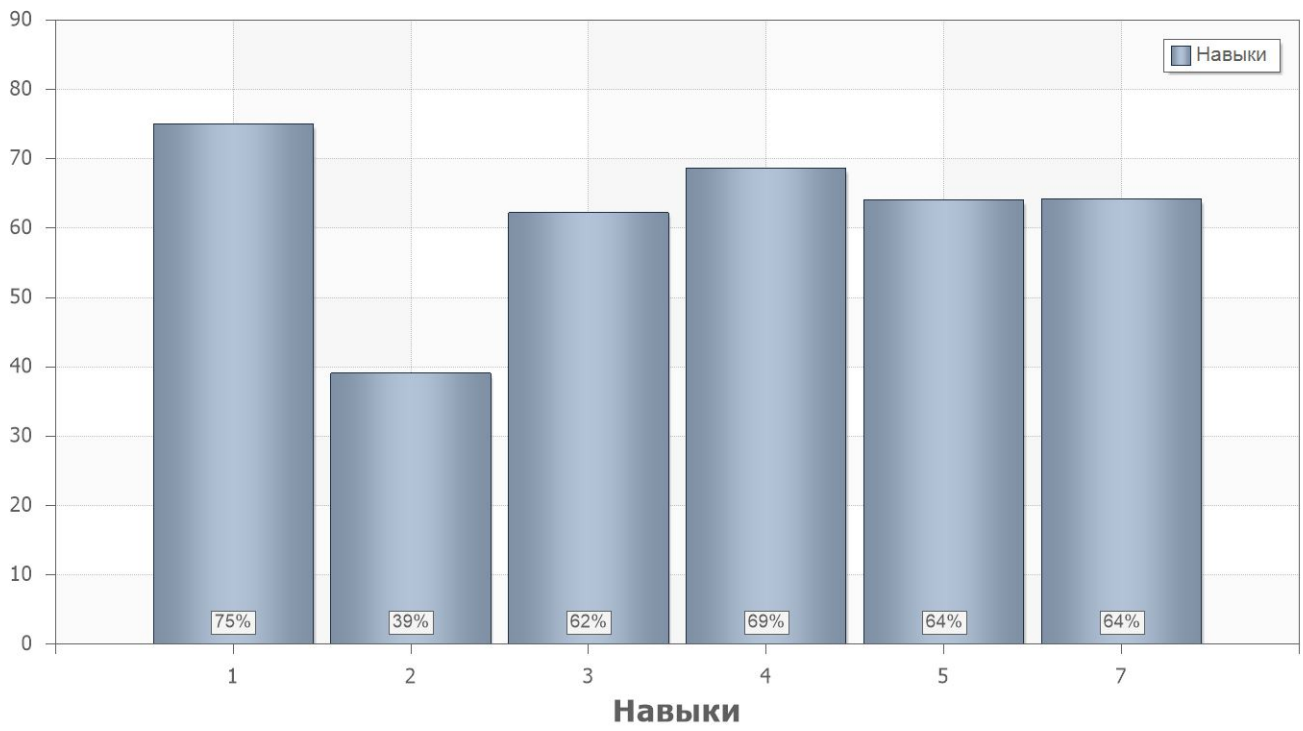
4.1.

	. % .
2	60
1	68

4.2.

	. % .		
1			
1	78	1.0	1.0
2	72	1.0;6.0	1.0
3	46	3.0	3.0
4	68	5.0	4.0
5	38	2.0	2.0
6	78	3.0;6.0	3.0
7	86	7.0	5.0
8	46	7.0	5.0
9	60	7.0	5.0
10	63	7.0	7.8
11	59	1.0;3.0	7.0
12	59	7.0	7.0
13	88	8.0	7.0
14	50	8.0	7.0
15	65	2.0	7.0





4.3.

Name	9	9	9
1	60%	53%	90%
2	54%	53%	77%

4.4.

PartIndex	Number	9	9	9
1	1	83%	67%	83%
	2	70%	58%	88%
	3	13%	38%	96%
	4	70%	50%	83%
	5	30%	17%	71%
	6	90%	54%	88%
	7	90%	67%	100%
	8	17%	42%	88%
	9	37%	67%	83%
	10	33%	79%	83%
	11	60%	50%	67%
	12	67%	29%	79%
	13	87%	92%	88%
	14	43%	38%	71%
	15	60%	50%	88%